

**assfalg**  
TOOLS

● DEBURRING

● VIBRATOR GRINDING

● CHAMFERING

**assfalg**  
**MACHINES**

**assfalg**  
MAGNETS

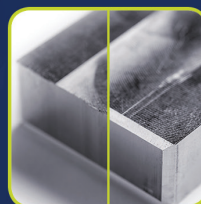
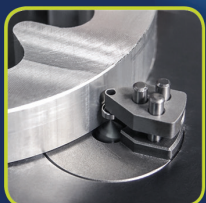
● TOOL GRINDING

● DEBURRING AND EDGE  
ROUNDING

# Deburring | Chamfering

## Handheld, mobile and stationary machines

Assfalg chamfering- and deburring machines  
for chamfering, deburring, rounding edges,  
and preparing welding seams.



**The Ace for Metal**

MAGNETS    MACHINES    TOOLS

**Assfalg GmbH**

Buchstraße 149  
73525 Schwäbisch Gmünd  
Germany

Phone +49 (0) 71 71.92 505-0

Fax +49 (0) 71 71.92 505-50

[info@assfalg-metal.com](mailto:info@assfalg-metal.com)

[www.assfalg-metal.com](http://www.assfalg-metal.com)

Edition 05.2023

The right of changes and deviating pictures is reserved. Liability is excluded.

Design and production:  
Hela Werbung GmbH | [www.hela.com](http://www.hela.com)



# Assfalg machines in application



# Deburring | Chamfering

## Handheld, mobile and stationary machines



### Handheld machines



 <p>1 mm</p> <p>Straight edges</p>  <p>1 mm</p> <p>Contours</p>	<p><b>Mango II   Universal handle A   GLO-BURR</b> <b>07</b></p> <p>Hand Deburrer</p>	<p><b>AQ 1   AQ 3</b> <b>13</b></p> <p>Control Unit for Electric Grinder</p>
 <p>1 mm</p> <p>Straight edges</p>  <p>1 mm</p> <p>Contours</p>	<p><b>DHB 330</b> <b>08</b></p> <p>Pneumatic Hand Belt Grinder</p>	<p><b>ASO 300   ASO 310</b> <b>14</b></p> <p>Chamfering Machine, handheld, pneumatic</p>  <p>2 mm</p> <p>Straight edges</p>  <p>6 mm</p> <p>Contours</p>
 <p>1 mm</p> <p>Straight edges</p>  <p>1 mm</p> <p>Contours</p>	<p><b>AG 360   AG 460   GDS 009</b> <b>09</b></p> <p>Pneumatic Grinder</p>	<p><b>ASO 313   ASO 312</b> <b>15</b></p> <p>Chamfering Machine, handheld, electric   pneumatic</p>  <p>3 mm</p> <p>Straight edges</p>
 <p>1 mm</p> <p>Straight edges</p>  <p>1 mm</p> <p>Contours</p>	<p><b>NM 101-E   NM 111   NM 112   NM 3   NM 301</b> <b>10</b></p> <p>Pneumatic Grinder</p>	<p><b>SMA 20-AEF   SMA 20-APF</b> <b>16</b></p> <p>Chamfering Machine, handheld, electric   pneumatic</p>  <p>4 mm</p> <p>Straight edges</p>  <p>4 mm</p> <p>Contours</p>
 <p>1 mm</p> <p>Straight edges</p>  <p>1 mm</p> <p>Contours</p>	<p><b>MT-A</b> <b>11</b></p> <p>Battery-operated Electric Grinder</p>	<p><b>SMA 30-BER   SMA 30-BPV</b> <b>17</b></p> <p>Chamfering Machine, handheld, electric   pneumatic</p>  <p>6 mm</p> <p>Straight edges</p>  <p>30 mm</p> <p>Contours</p>
 <p>3 mm</p> <p>Straight edges</p>  <p>3 mm</p> <p>Contours</p>	<p><b>S3   F6   MT W   MT 100   MT Ergo</b> <b>12</b></p> <p>Electric Grinders</p>	<p><b>SMA 40-BER   SMA 40-APV</b> <b>18</b></p> <p>Chamfering Machine, handheld, electric   pneumatic</p>  <p>15 mm</p> <p>Straight edges</p>  <p>15 mm</p> <p>Contours</p>





## Handheld machines



Straight edges



Contours

**SMA 50-BER |  
SMA 50-BPV**  
Chamfering Machine,  
handheld, electric | pneumatic

19



Straight edges



Contours

**SMA 60-BHV |  
SMA 60-BER**  
Chamfering Machine, handheld,  
electric

20



Straight edges

**ASO 700 | ASO 760-2**  
Chamfering Machines,  
Deburring machines,  
handheld, electric

21

# Deburring | Chamfering

## Handheld, mobile and stationary machines



### Mobile and stationary machines



 <p>17 mm</p> <p>Straight edges</p>	<p><b>CHP 7   CHP 21</b> <span style="float: right;"><b>22</b></span></p> <p>Automatic Bevelling Machines</p>
 <p>28 mm</p> <p>Straight edges</p>	<p><b>CHP 21G</b> <span style="float: right;"><b>23</b></span></p> <p>Automatic Bevelling Machine</p>
 <p>53 mm</p> <p>Straight edges</p>	<p><b>ASO 900   ASO 900 Plus   ASO 900 Plus-Bigger</b> <span style="float: right;"><b>24</b></span></p> <p>Chamfering Machine, selfpropelling</p>
 <p>74 mm</p> <p>Straight edges</p>	<p><b>ASO 930   ASO 930 Plus</b> <span style="float: right;"><b>25</b></span></p> <p>Chamfering Machine, selfpropelling</p>
 <p>65 mm</p> <p>Straight edges</p>	<p><b>ASO 910</b> <span style="float: right;"><b>26</b></span></p> <p>Chamfering Machine, selfpropelling</p>
 <p>90 mm</p> <p>Straight edges</p>	<p><b>ASO 920</b> <span style="float: right;"><b>27</b></span></p> <p>Chamfering Machine, selfpropelling</p>





## Stationary Machines



Straight edges

### BKE 550

Sheet Deburring Machine

28



Straight edges

### ASO 160-M | ASO 160-MSL

Chamfering Machine with V-prism for Straight Edges

36



Straight edges

### AF 165

Beveling Machine with Sanding Disk

29



Straight edges

### WKF 170

Chamfering Machine, angle adjustable

38



Straight edges

### KSM 125 | KSM 130

Chamfer Grinding Machine for Straight Edges

30



Straight edges

### MMB 400 B | MMB 500 L | MMB 600 C

Chamfering Machine, angle adjustable

40



Straight edges

### Speedy Prisma 210-PSL

Beveling Machine with Sliding Carriage

31



Straight edges



Contours

### Speedy Contour 270-K | 270-KSL | 320-K | 320-KSL

Beveling Machine for Contours

42



Straight edges

### FS 5

Beveling Machine with V-prism

32



Straight edges



Contours

### KKE 1 | KKE 2

Beveling Machine for Contours

44



Straight edges

### ASO 850-K

Beveling Machine with V-prism for Straight Edges

33



Straight edges



Contours

### ASO 600-ASL

Beveling Machine for Contours

46



Straight edges

### ASO 650 | ASO 650-WSL

Chamfering Machine with V-prism for Straight Edges

34



Straight edges



Contours

### KKF 4-SL

Chamfering Machine for Contours

48

# Deburring | Chamfering

## Handheld, mobile and stationary machines



### Stationary Machines



 Straight edges	 Contours	<b>KKF 3-SL</b> Chamfering Machine for Contours	50	 Straight edges	 Contours	<b>ASM 18   ASM 60</b> Centrifugal Grinding Machine	62	
 Straight edges	 Contours	<b>M1 Surfacer</b> Deburring Grinding Machine	52	 Straight edges	 Contours	<b>RT 200   RT 400   RT 600   RT 800</b> Rotary Dryer for the Rotary Vibrator	63	
 Straight edges	 Contours	<b>TF Surfacer</b> Deburring Edge Rounding Machines	54	<b>ENVIRO 1000</b> Water Treatment System				64
 Straight edges	 Contours	<b>TV 95-SL</b> Trough Vibrator   Stone Vibration Deburring and Slide Grinding Machine	56	 Straight edges	 Contours	<b>UA 5</b> Power Engine	65	
 Straight edges	 Contours	<b>TV 15-   40-   100-   200-   350-   500-   500- Long   1000-SL</b> Trough Vibrator   Stone Vibration and Slide Grinding Machine	58	<b>EDG 213   EDG 1226</b> Drill Grinder				66
 Straight edges	 Contours	<b>RV 15-SL   40-SL   120-SL   220-SL   420-SL   720-SL   1000-SL</b> Rotary Vibrator   Stone Vibration and Slide Grinding Machine	60	<b>NEUTRIX</b> Electrode Grinding Machine				67



# Mango II | Universal handle A | GLO-BURR

## Hand Deburrer

The high-quality hand deburrers are a favourite and wanted compact tool for daily manual use. You can deburr drills, slots and edges. Varied blades are available for all kinds of application. The rotating blades adapt to the contour of the workpiece.

### Handheld



### Straight edges



### Contours



GLO-BURR



Universal Hand Tool A - Set E



Mango II

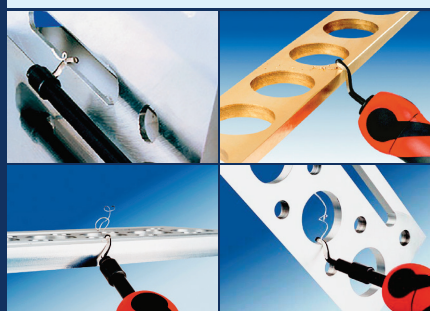
Blade (B, C or E) + Blade holder (Type B, Type C or Type E) + Handle (Mango II or Universal handle A)



Further accessories can be found in our **Accessory Catalogue**.

## Applications

- ▶ Deburring of workpieces made of steel, stainless steel, aluminium, brass and synthetic materials
- ▶ Deburring of straight edges and contours



## Features

- ✔ Lightweight and handy form
- ✔ Easy handling
- ✔ Non-coated and coated blades

## Options

- ✔ Various handles
- ✔ Various blade holders
- ✔ Various blades

## Delivery contents

- ✔ Deliverable as single item or as set

## Technical data

	Mango II	Universal Hand Tool A	GLO-BURR
Blade holders	B, C, E	B, C, E	-
Blade	B, C, E	B, C, E	E
Maximum chamfer width	1 mm	1 mm	1 mm
Weight	0.08 kg	0.08 kg	0.02 kg
Item no.	61111	63	63258
	Handle grip	Blade holders	Blade
Set E (Art. no. 87)	Universal Hand Tool A	E	E100 + E200 + E300-
Set B (Art. no. 84)	Universal Hand Tool A	B	B10 + B20

# DHB 330

## Pneumatic Hand Belt Grinder

The pneumatic handheld belt grinder is used for the surface-, contour- and shape cut. The grinding arm swivelling by 360° allows individual adaptation to the work. The sanding belt is fixed by the automatic tensioning unit.



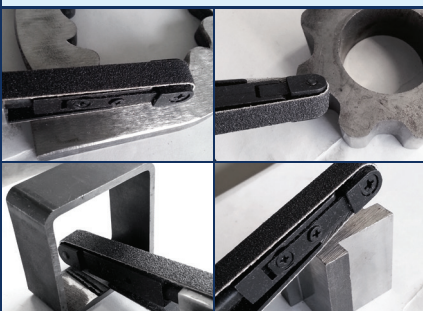
DHB 330



Further accessories can be found in our **Accessory Catalogue**.

### Applications

- ▶ **Deburring of edges and bore diameters and workpieces with the most different contours**
- ▶ **Processing of workpieces made of steel, hardened steel, aluminium, non-ferrous metal and plastic**
- ▶ **Processing of close slots, small breaches and difficult to access places**



### Features

- ✔ Robust design
- ✔ Low weight
- ✔ 360° swiveling grinding arm

### Options

- ✔ Grinding bands in different grain sizes

### Delivery contents

- ✔ 3 x grinding belt 330 x 10 mm (only by DHB 330)
- ✔ Allen key 4 mm

### Technical data

DHB 330

Motor	0.75 kW   16.000 rpm
Compressed air	400l/min   6 bar
Loudness	84 dB
Grinding belt	330 x 10 mm
Weight	0.83 kg
Item no.	60438



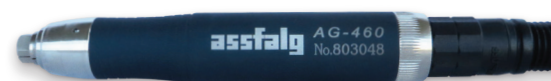
# AG 360 | AG 460 | GDS 009

## Pneumatic Grinder

The light-weight and handy pneumatic grinders are optimal for fine use. Confined spaces and every 3D-shapes can be processed using various grinding tools and rotary burrs.



AG 360



AG 460



GDS 009

### Handheld



### Straight edges



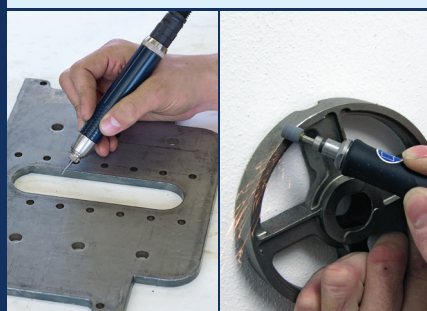
### Contours



Further accessories can be found in our **Accessory Catalogue**.

## Applications

- ▶ **Deburring of edges and bore diameters and workpieces with the most different contours**
- ▶ **Processing of workpieces made of steel, hardened steel, aluminium, non-ferrous metal and plastic**
- ▶ **Processing of close matches, small breaches and difficult to access places**



## Features

- ✔ Easy handling
- ✔ Very lightweight motor hand pieces
- ✔ High capacity and durability
- ✔ Large selection of tools
- ✔ Tool change within a few seconds

## Options

- ✔ Collet  $\varnothing$  3 mm
- ✔ Collet  $\varnothing$  6 mm (only for AG 460)
- ✔ Carbide rotary burrs
- ✔ Corundum grinding pencils

## Delivery contents

- ✔ Compressed and exhaust air hose
- ✔ Collet  $\varnothing$  3 mm
- ✔ Collet  $\varnothing$  6 mm (only for AG 460)
- ✔ Collet key
- ✔ Locking wrench
- ✔ Operating manual

## Technical data

	AG 360	AG 460	GDS 009
Motor	0.07 kW, 60.000 U/min	0.15 kW, 35.000 U/min	0.09 kW, 100.000 U/min
Compressed air	180l / min, 6 bar	240l / min, 6 bar	200l / min, 6.3 bar
Loudness	81 dB	81 dB	72 dB
Collets	$\varnothing$ 3 mm	$\varnothing$ 3 & 6 mm	$\varnothing$ 3 mm
Weight	0.1 kg	0.2 kg	0.2 kg
Item no.	42414	42727	31676

# NM 101-E | NM 111 | NM 112 | NM 3 | NM 301

## Pneumatic Grinder

The pneumatic grinders offer excellent torque performance. They have a lightweight housing and an ergonomic handle.

They are suitable for edge and surface processing of small to medium-sized workpieces.

The NM versions are available in straight or angled versions.



NM 101-E



NM 111



NM 112



NM 3



NM 301



Further accessories can be found in our **Accessory Catalogue**.

### Applications

- ▶ Removing rust, dirt and other pollutants
- ▶ Grinding, milling, polishing, deburring and engraving of round, angular or straight workpieces.
- ▶ Processing of narrow matches and small breakouts on difficult to access places as well as small and angular surfaces



### Features

- ✔ Low weight
- ✔ Long-lasting compressed air motor
- ✔ High capacity and durability
- ✔ Speed can be adjusted through rotating valve
- ✔ Tool change within a few seconds

### Delivery contents

- ✔ Compressed air hose and exhaust air hose
- ✔ Collet chucks  $\varnothing$  3 mm (for NM 101-E and NM 112)

### Options

- ✔ Collet chuck  $\varnothing$  2.35 mm (only for NM 101-E)
- ✔ Collet chuck  $\varnothing$  6 mm (only for NM 3 and NM 301)
- ✔ Collet chuck  $\varnothing$  3 mm (for all models except for NM 111 and NM 301)
- ✔ HM rotary burr set and/or
- ✔ Corundum grinding pencils

- ✔ Collet chucks  $\varnothing$  6 mm (for NM 301-E and NM 3)
- ✔ Grinding disc set (for NM 111)
- ✔ Collet chuck quick connector
- ✔ Locking wrench

### Technical data

	NM 101-E	NM 111	NM 112	NM 3	NM 301
Speed	48.000 U/min	25.000 U/min	45.000 U/min	35.000 U/min	30.000 U/min
Compressed air	100l / min 4 bar	160l / min 6 bar	160l / min 6 bar	250l / min 6 bar	180l / min 6 bar
Collets	$\varnothing$ 3 mm	-	$\varnothing$ 3 mm	$\varnothing$ 6 mm	$\varnothing$ 6 mm
Weight	0,1 kg	0,1 kg	0,1 kg	0,3 kg	0,4 kg
Item no.	45856	26291	26289	74061	45808

# MT-A

## Battery-operated electric grinder

It is the perfect battery-operated tool for deburring, separating, grinding and polishing.

Due to its unrestricted mobility, the MT-A enables continuously fatigue-free and efficient work.

In addition, its precise and powerful motor makes it easy to process any material. Almost all fields of application are covered.



MT-A



Further accessories can be found in our **Accessory Catalogue**.

### Handheld



### Straight edges



### Contours



## Applications

- ▶ Ideal tool for deburring, milling and polishing
- ▶ Processing of work pieces made of steel, hardened steel, aluminium, non-ferrous metal and plastic piece
- ▶ Processing of close matches, small breaches and difficult to access places
- ▶ Bores from  $\varnothing = 7$  mm can be processed



## Features

- ✔ Mains-independent, mobile applications
- ✔ Speed range from 3,000 to 30,000 rpm (absolutely smooth running properties)
- ✔ Rapid clamping
- ✔ Battery capacity indicator
- ✔ Switchable between clockwise and anticlockwise rotation

## Options

- ✔ Collet chucks 3 mm
- ✔ Connection cable for separation of battery and handpiece
- ✔ Belt bag
- ✔ HM rotary burr
- ✔ Corundum, CBN & diamond grinding pencils

## Delivery contents

- ✔ Collet chuck  $\varnothing$  3 mm
- ✔ Battery MH MT A
- ✔ Control unit
- ✔ Charging station
- ✔ Transport case
- ✔ Operating manual

## Technical data

MT-A

Speed	3.000 - 30.000 U/min
Torque	5,5 Ncm
Energy	90 - 264 V, 50/60 Hz
Collet	$\varnothing$ 3 mm
Weight	0,6 kg
Item no	69851



# S3 | F6 | MT W | MT 100 | MT Ergo

## Electric Grinders

The handy and powerful electric grinders are optimally suited for individual applications for deburring, cutting, grinding and polishing. Confined spaces and every 3D-shapes can be processed using various grinding tools and rotary burrs.



Handheld



Straight edges



Contours

F6: 3 mm  
S3, MT W: 2 mm  
MT 100: 1 mm

F6: 3 mm  
S3, MT W: 2 mm  
MT 100: 1 mm



Further accessories can be found in our **Accessory Catalogue**.



### Applications

- ▶ Ideal tool for deburring, cutting, grinding and polishing
- ▶ Processing of workpieces made of steel, hardened steel, aluminium, non-ferrous metal and plastic
- ▶ Processing of close slots, small breaches and difficult to access places



### Features

- ✔ Easy handling
- ✔ Absolute smooth running, even with 100,000 rpm
- ✔ Powerful torque with both high and low speed.
- ✔ Long lifetime
- ✔ Freely selectable configuration of controller and motor handpiece
- ✔ Made in Germany

### Options

- ✔ Collet 3 mm and smaller
- ✔ Collet 6 mm
- ✔ Special collet on request
- ✔ Angle attachment 50° and 90° (for MT W only)
- ✔ Carbide rotary burrs
- ✔ Corundum, CBN & diamond grinding tools
- ✔ Controller AQ1 or AQ3

### Delivery contents

- ✔ Collet ø 3 mm ( S3, MT W & MTQ 100 & MT Ergo only)
- ✔ Collet ø 6 mm(F6 only)
- ✔ Collet key (F6 only)
- ✔ Locking wrench (F6 only)
- ✔ Handpiece support
- ✔ Operating manual

### Technical data

	S3	F6	MT W	MT 100	MT Ergo
Collet chuck	ø 3 mm	ø 6 mm	ø 3 mm	ø 3 mm	ø 3 mm
Weight	0,36 kg	0,23 kg	0,14 kg	0,33 kg	0,33 kg
Control unit	AQ 1 or AQ 3	AQ 1 or AQ 3	AQ 1 or AQ 3	AQ 1 or AQ 3	AQ 1 or AQ 3
Item no.	68442	63367	27303	66363	75368

# AQ 1 | AQ 3

## Control unit for electric grinder

The control units AQ1 and AQ3 are equipped with 1 and 3 motor connections respectively and are designed for all Assfalg handpiece electric grinders. The control units support infinitely variable speed control and store the set maximum speeds for each connection individually.

The intelligent control electronics enable applications that previously required a large number of control units. At the same time, the peak power of up to 300 watts allows the most demanding materials to be processed.



AQ 3



### Features

- ⚙ High power of up to 300 watts and 100,000 rpm
- ⚙ Three connections for handpieces and spindles (AQ3)
- ⚙ Perfectly readable display
- ⚙ Intelligent connection monitoring
- ⚙ Right and left rotation
- ⚙ Made in Germany

### Options

- ⚙ Foot switch

### Delivery contents

- ⚙ Operating manual

### Technical data

	AQ 1 ⚙	AQ 3 ⚙
Energy	230 V, 50/60 Hz	230 V, 50/60 Hz
Torque	8 Ncm	11 Ncm
Motor connections	1	3
Dimensions (WxDxH)	135 x 250 x 215 mm	135 x 250 x 215 mm
Weight	2,8 g	2,8 g
Item no.	75369	73801

# ASO 300 | ASO 310

## Chamfering Machine, handheld, pneumatic

The pneumatic, handheld chamfering machines are an ideal solution for deburring straight edges and contours. The low weight and ergonomic design make them easy to handle and operate with.

### Handheld



### Straight edges



ASO 300: 1 mm  
ASO 310: 2 mm

### Contours



ASO 300: 1 mm  
ASO 310: 2 mm

### Radius milling



ASO 300: 1 mm  
ASO 310: 2 mm



Further accessories can be found in our **Accessory Catalogue**.

## Applications

- ▶ Chamfering of flat workpieces made of steel, max. 1,000 N/mm<sup>2</sup>, aluminium, brass, copper, synthetic material, acrylic glass, wood and much more
- ▶ Can be used for straight edges and contours
- ▶ For 45° chamfers and for rounding edges
- ▶ Bores from  $\varnothing=7$  mm can be processed (ASO300)



## Features

- ✔ Absolutely burr-free cutting
- ✔ Clean and consistent processing of component parts and series
- ✔ Quick change of the carbide inserts
- ✔ Suitable for continuous operation

## Options

- ✔ Radius inserts R1 – R2 mm
- ✔ Stop collar for thin sheets
- ✔ Plastic disk for scratch-free surfaces

## Delivery contents

- ✔ Hook spanner  $\varnothing$  58 – 65 mm
- ✔ Torx key T 9
- ✔ Setting gauge
- ✔ Cutter head with cutting inserts
- ✔ Compressed air hose with nipple
- ✔ Operating manual

## Technical data

	ASO 300	ASO 310
Motor	0.15 m <sup>3</sup> /min.   28,000 rpm	0.4 m <sup>3</sup> /min   13,000 rpm
Energy	6 bar	6 bar
Maximum chamfer width	1 mm	2 mm
Guide ball bearing	min. $\varnothing$ 6 mm	min. $\varnothing$ 11 mm
Cutter head	45°	45°
Weight	0.5 kg	1.8 kg
Item no.	61881	20039



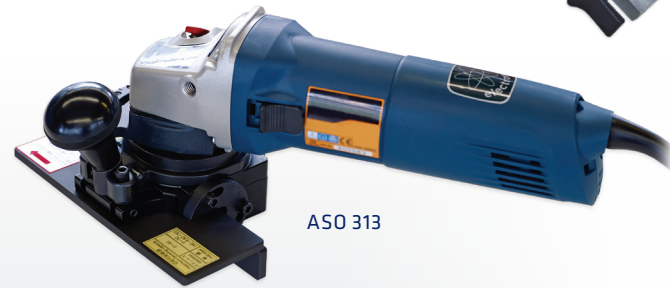
# ASO 312 | ASO 313

## Chamfering Machine, handheld, electric | pneumatic

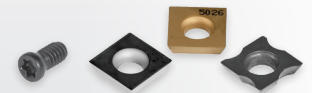
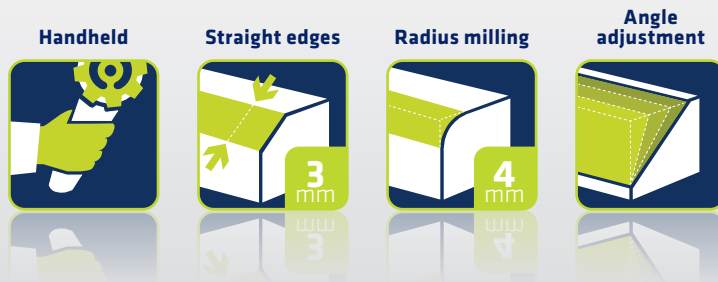
The compact and robust, handheld Chamfering Machines are particularly suitable for chamfering flat workpieces. Stable, screwed cutting inserts guarantee long tool life.



ASO 312



ASO 313



Further accessories can be found in our **Accessory Catalogue**.

### Applications

- ▶ Chamfering of flat workpieces made of steel, stainless steel, cast iron, aluminium, brass, and plastic
- ▶ Chamfering of straight edges
- ▶ Preparation of Quick change of the carbide inserts welding edges
- ▶ Rounding edges



### Features

- ✔ Absolutely burr-free cutting
- ✔ Clean and consistent processing of component parts and series
- ✔ Quick changeover or replacement of the carbide-cutting inserts
- ✔ Wear-resisting, hardened guide rails
- ✔ Long tool life of the cutting inserts
- ✔ Adjustable according to right- or left-hander
- ✔ Angle-adjustable rails

### Options

- ✔ Radius inserts R2 – R4 mm

### Delivery contents

- ✔ Allen key 3 mm
- ✔ Allen key 4 mm (only with ASO 313)
- ✔ Torx key T 15
- ✔ Handle grip
- ✔ Cutter head with cutting inserts
- ✔ Swarf box (only with ASO 313)
- ✔ Operating manual

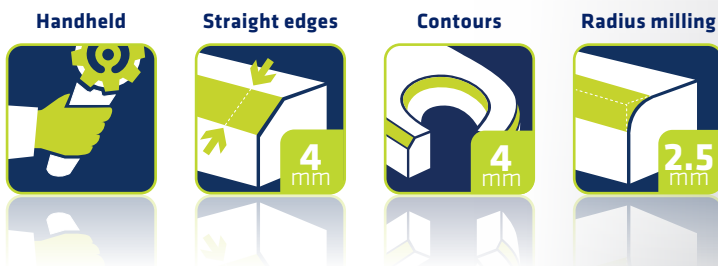
### Technical data

	ASO 312	ASO 313
Motor	0.5 kW   13,000 rpm	0.9 kW   10,000 rpm
Energy	900l / min   6 bar	230 V, 50/60 Hz
Maximum chamfer width	3 mm	3 mm
Guide rails	hardened	hardened
Angular adjustment	15° – 45°	15° – 45°
Weight	2.9 kg	3.4 kg
Item no.	26153	32938

# SMA 20-AEF | SMA 20-APF

## Chamfering Machine, handheld, electric | pneumatic

The pneumatic, handheld chamfering machines are a perfect solution for deburring edges and contours. The ergonomic handle (two-hand operation) enables stable and safe deburring.



Further accessories can be found in our **Accessory Catalogue**.

### Applications

- ▶ Chamfering of flat workpieces made of steel, stainless steel, cast iron, non-ferrous metals and plastic
- ▶ Chamfering of straight edges and contours, rounding edges
- ▶ The pneumatic machine provides a duty cycle of 50-70% / h and the electric type varies between 20-60% / h, depending on the material.



### Features

- ⊕ Absolutely burr-free cutting
- ⊕ Adaptable, also at difficult contours
- ⊕ Clean and consistent processing of component parts and series
- ⊕ Quick exchange of the carbide-cutting inserts
- ⊕ Small cutter head with cutting inserts also for bores from  $\varnothing$  19.4 mm

### Options

- ⊕ Radius inserts R1.2 – R2.5 mm

### Delivery contents

- ⊕ Copper paste
- ⊕ Torx key T 15
- ⊕ Operating manual

### Technical data

	SMA 20-AEF ⊕	SMA 20-APF ⊕
Motor	1.2 kW   11.000 rpm	0.67 kW   12.000 rpm
Energy	230 V, 50/60 Hz	1,200l / min   6-7 bar
Maximum chamfer width	4 mm	4 mm
Guide ball bearing	min. $\varnothing$ 19.4 mm	min. $\varnothing$ 19.4 mm
Cutter head	45°	45°
Weight	2.95 kg	2.95 kg
Item no.	65694	68409

# SMA 30-BER | SMA 30-BPV

## Chamfering Machine, handheld, electric | pneumatic

The pneumatic, handheld chamfering machines are the ideal solution for deburring and chamfering internal and external edges, contours and bores. A flywheel mass allows soft cutting and high cutting efficiency.



SMA 30-BER

SMA 30-BPV



Further accessories can be found in our **Accessory Catalogue**.

### Applications

- ▶ Chamfering of flat workpieces made of steel, stainless steel, cast iron, aluminium, brass, and plastic
- ▶ Chamfering of straight edges and contour, rounding edges
- ▶ The pneumatic machine provides a duty cycle of 50-70% / h, the electric type varies between 20-60% / h, depending on the material



### Features

- ✔ Absolutely burr-free cutting
- ✔ Exact adjustment due to existing scaling
- ✔ Small cutter head with cutting inserts also for bores from  $\varnothing$  10 mm
- ✔ Low tool costs due to inserts that can be rotated up to eight times
- ✔ Long tool life due to stable, screwed cutting inserts

### Options

- ✔ Radius inserts R1.2 – R6 mm
- ✔ Cutter heads with different degrees

### Delivery contents

- ✔ Allen key 3 mm
- ✔ Torx key T 15
- ✔ Tool box
- ✔ Operating manual

### Technical data

	SMA 30-BER ⚡	SMA 30-BPV ⚡
Motor	1.5 kW   2,500 – 7,900 rpm	1.04 kW   12.000 rpm
Energy	230 V, 50/60 Hz	1.200l / min   6 – 7 bar
Maximum chamfer width	6 mm	6 mm
Guide ball bearing	min. $\varnothing$ 26.3 mm	min. $\varnothing$ 26.3 mm
Cutter head	30° / 45° / 60°	30° / 45° / 60°
Weight	3.5 kg	3.0 kg
Item no.	70381	71178



# SMA 40-BER | SMA 40-APV

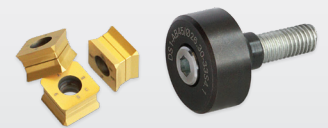
## Chamfering Machine, handheld, electric | pneumatic

The handheld chamfering machine for straight internal and external edges, contours and bores cuts very smoothly with low vibration due to the spring technology. The milling cutter quick-change system enables easy setting-up to other chamfer angles.



SMA 40-BER

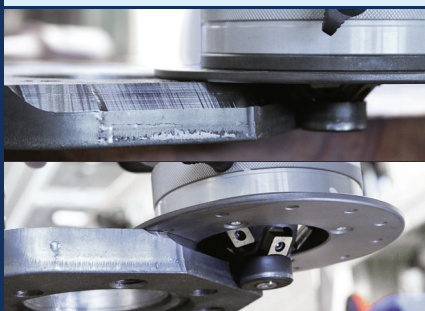
SMA 40-APV



Further accessories can be found in our **Accessory Catalogue**.

### Applications

- ▶ Chamfering of flat workpieces made of steel, stainless steel, cast iron, aluminium, brass, and plastic
- ▶ Chamfering of straight edges and contours, rounding edges
- ▶ For preparing welding seams
- ▶ The pneumatic machine provides a duty cycle of 50-70% / h, the electric type varies between 20-60% / h, depends on the material



### Features

- ⌚ Absolutely burr-free cutting
- ⌚ Clean and consistent processing of component parts and series
- ⌚ Cutter quick-change system
- ⌚ Special spring technology saves the tools
- ⌚ Long tool life of the cutting inserts (8-times)
- ⌚ Ergonomic two-hand operation

### Options

- ⌚ Radius cutter and radius inserts from R1.2 – R8 mm
- ⌚ Cutter heads in various degrees
- ⌚ Guide stop for straight edges
- ⌚ 3D- swivel arm

### Delivery contents

- ⌚ Allen key 5 mm
- ⌚ Torx key T 15
- ⌚ Tool box
- ⌚ Operating manual

### Technical data

	SMA 40-BER ⌚	SMA 40-APV ⌚
Motor	1.75 kW   2,000-7,600 rpm	1.75 kW   2,000-7,600 rpm
Energy	230 V, 50/60 Hz	2,400l / min   6-7 bar
Maximum chamfer width	15 mm	15 mm
Cutter head	0° – 80°	0° – 80°
Guide ball bearing	min. Ø 26.3 mm	min. Ø 26.3 mm
Weight	10 kg	10 kg
Item no.	71471	71981

# SMA 50-BER | SMA 50-BPV

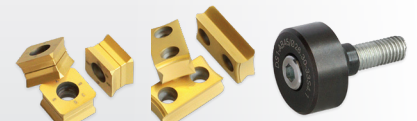
## Chamfering Machine, handheld, electric | pneumatic

The spring-supported flywheel mass technology converts these chamfering milling machines to compact handheld milling centres. They start with a soft cut, continue with extremely powerful chamfering efficiency and run with extra-ordinarily low vibrations. In addition, the tools can be rapidly changed. Your benefit: Low piece costs.



SMA 50-BEV

SMA 50-BPV



Further accessories can be found in our **Accessory Catalogue**.

### Applications

- ▶ Chamfering of flat workpieces made of steel, stainless steel, cast iron, aluminium, brass, and plastic
- ▶ Chamfering of straight edges and contours, rounding edges
- ▶ For preparing welding seams
- ▶ The pneumatic machine provides a duty cycle of 50-70% / h, the electric type varies between 20-60% / h, depends on the material



### Features

- ✔ Absolutely burr-free cutting
- ✔ Clean and consistent processing of component parts and series
- ✔ Cutter quick-change system
- ✔ Special spring technology saves the tools
- ✔ Long tool life of the cutting inserts (8-times)
- ✔ Ergonomic two-hand operation

### Options

- ✔ Radius cutter and radius inserts from R2 - R8 mm
- ✔ Cutter heads in various degrees
- ✔ Guide stop for straight edges
- ✔ 3D - swivel arm

### Delivery contents

- ✔ Allen key 5 mm
- ✔ Torx key T 15
- ✔ Tool box
- ✔ Operating manual

### Technical data

	SMA 50-BER	SMA 50-BPV
Motor	2 kW   2.200 - 7.800 rpm/min	2 kW   8.500 rpm
Energy	230 V, 50/60 Hz	2.400l / min   6-7 bar
Maximum chamfer width	20 mm	20 mm
Cutter head	0° - 80°	0° - 80°
Guide ball bearing	min. Ø 26,3 mm	min. Ø 26,3 mm
Weight	11 kg	10 kg
Item no.	73317	71479

# SMA 60-BHV | SMA 60-BER

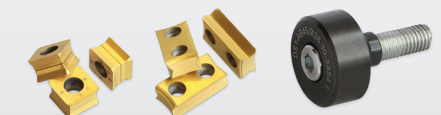
## Chamfering Machine, handheld, electric

They are the most robust and powerful manual edge milling machines for heavy-duty use. Thanks to the spring-loaded flywheel technology, large chamfers can be milled even more easily, safely and economically.



SMA 60-BHV

SMA 60-BER



Further accessories can be found in our **Accessory Catalogue**.

### Applications

- ▶ Chamfering of flat workpieces made of steel, stainless steel, cast iron, aluminium, brass, and plastic
- ▶ Chamfering of straight edges and contours, rounding edges
- ▶ For welding seam preparation to produce maximum welding bevels



### Features

- ✔ Absolutely burr-free cutting
- ✔ Clean and consistent processing of component parts and series
- ✔ Cutter quick-change system
- ✔ Special spring technology saves the tools
- ✔ Long tool life of the cutting inserts
- ✔ Ergonomic two-hand operation

### Options

- ✔ Radius cutter and radius inserts from R2 – R15 mm
- ✔ Cutter heads in various degrees
- ✔ Guide stop for straight edges
- ✔ 3D- swivel arm

### Delivery contents

- ✔ Allen key 5 mm
- ✔ Torx key T 15
- ✔ Tool box
- ✔ Operating manual

### Technical data

	FU 2.2	SMA 60-BHV	SMA 60-BER
Motor	-	2.9kW   1,000-8,500 rpm	2,2kW   2.200-7.800 rpm
Energy	230 V, 50/60 Hz	230 V, 300 Hz	230 V, 50/60 Hz
Maximum chamfer width	-	30 mm	30 mm
Cutter head	-	0° – 80°	0° – 80°
Guide ball bearing	-	min. Ø 26.3 mm	min. Ø 26,3 mm
Controller	-	FU 2.2	-
Weight	9.9 kg	13 kg	11 kg
Item no.	10601	71203	71478



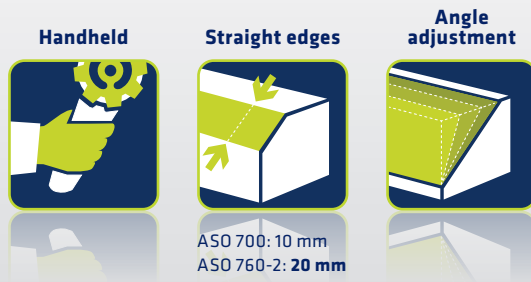
# ASO 700 | ASO 760-2

## Chamfering machine, deburring machine handheld, electric

The compact and robust handheld chamfering machines are particularly suitable for preparing welding seams of large workpieces, especially for routing and shearing burrs on straight edges.



ASO 760-2



Further accessories can be found in our **Accessory Catalogue**.

### Applications

- ▶ Suitable for sturdy continuous operation with manual feed
- ▶ For preparing welding seams
- ▶ Ideal for chamfering steel and non-ferrous metals

### Features

- ✔ Easy chamfer- and angle adjustment
- ✔ Can also be used for milling or shearing burrs
- ✔ Wear-resisting, hardened guide rails
- ✔ Guide rails with slide rollers (only with ASO 760-2)
- ✔ Sturdy cast-iron construction with ergonomic handle grip
- ✔ Ideal for steel- and alu processing

### Options

- ✔ Appliance for tubes with external diameter from 150 mm

### Delivery contents

- ✔ Allen keys 4 and 5 mm
- ✔ Cutter head with cutting inserts
- ✔ Electric cable without plug
- ✔ Operating manual



### Technical data

	ASO 700	ASO 760-2
Motor	0,55 kW   2.900 rpm	1.5 kW   2.900 rpm
Energy	400 V, 50 Hz	400 V, 50 Hz
Maximum chamfer width	10 mm	20 mm
Angular adjustment	15° - 45°	15° - 60°
Guide rails	gehärtet	hardened with guide rollers
Dimensions (LxWxH)	380 × 200 × 240 mm	380 × 290 × 310 mm
Weight	15 kg	19.5 kg
Item no.	10669	10670

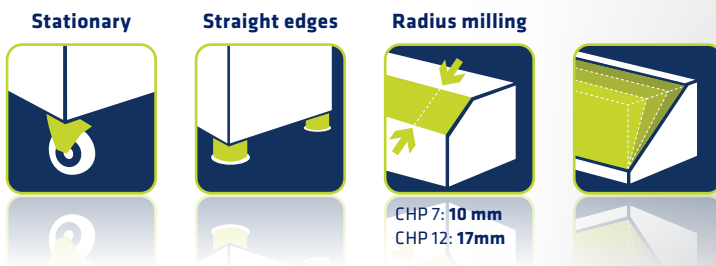
# CHP 7 | CHP 12

## Automatic Beveling Machines

The weld edge forming/milling machines shear the edge with the help of a cutting wheel, completely self-propelled, in a low-noise and dust-free way, leaving a rough bevel.

They produce perfect welding edges with the best price-performance ratio.

They are able to chamfer plates and pipes, including large diameters, as well as small parts and pipes with low thickness.



CHP 7



CHP 12

### Applications

- ▶ **Functional for workshop and construction**
- ▶ **Suitable for different sheets and profiles as well as for pipes and shots.**
- ▶ **Perfect for small thicknesses and also for small quantities**
- ▶ **Weld seam preparation K, V, X, Y chamfering**



### Features

- ✔ Automatic feed
- ✔ Recommended for the machining of aluminium
- ✔ Portable, lightweight and quick
- ✔ Disc processing possible from Ø 350 mm

### Options

- ✔ Further devices with angle devices for: 22.5° | 25° | 35° | 37.5° | 45°
- ✔ Plastic rollers to avoid material marking
- ✔ Mobile undercarriage

### Delivery contents

- ✔ 3 cutters for steel (1 already fitted)
- ✔ 1 angle device for 30°
- ✔ 1 device for chamfering pipes
- ✔ 1 set of wrenches: 12-13, 18-19 and 24-26 mm
- ✔ 1 Allen key set: 5 and 6 mm
- ✔ Operating manual

- ✔ Spare part for small sheet metals: min.
- ✔ Panel width 20 - 25 - 32 and 40 mm
- ✔ Milling cutter for stainless steel and aluminium

### Technical Data

	CHP 7	CHP 12
Motor	0,55 kW	2,2 kW
Energy	400 V, 50 Hz	400 V, 50 Hz
Max. chamfer width	10 mm	17 mm
Chamfer angle	22,5°   25°   30°   35°   37,5°   45°	22,5°   25°   30°   35°   37,5°   45°
Chamfer speed	1,6 m/min	2,6 m/min
Sheet width	3 bis 16 mm	6 bis 40 mm
Sheet thickness	min. 55 mm	min. 55 mm
Weight	45 kg	65 kg
Item No.	35333	24353

# CHP 21G

## Automatic Beveling Machine

The automatic beveling machine CHP 21G is designed for the stationary and portable use in weld seam preparation.

The integrated infinitely variable angle adjustment of the CHP 21G allows easy and individual adjustment of the chamfer angle at any time.



CHP 21G



### Applications

- ▶ Functional for workshop and construction
- ▶ Ideal for chamfering steel and non-ferrous metals
- ▶ Weld seam preparation K, V, X, Y chamfering



### Features

- ✔ Infinitely variable angle adjustment
- ✔ Disc processing possible from Ø 350 mm
- ✔ Designed for continuous operation
- ✔ High robustness for hard industrial use

### Delivery contents

- ✔ Mobile trolley
- ✔ 3 cutters (1 already fitted)
- ✔ 1 set of wrenches: 24-27, 30-32 and 32-36 mm
- ✔ 1 Allen key set: 4, 6, 8 and 14 mm
- ✔ 1 torque wrench
- ✔ Operating manual

### Options

- ✔ Plastic rollers to avoid material markings

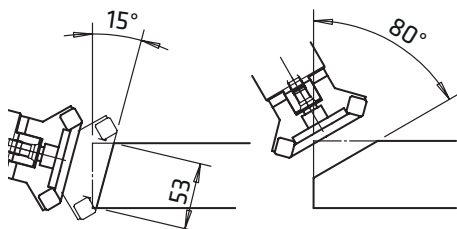
### Technical Data

Technical Data	CHP 21G
Motor	3,0 kW
Energy	400 V, 50 Hz
Max. chamfer width	28 mm
Chamfer angle	20° bis 45°
Chamfer speedt	1,7 m/min
Sheet width	150 mm
Sheet thickness	min. 70 mm
Weight	450 kg
Item No.	75133

# ASO 900 | ASO 900 Plus | ASO 900 Plus-Bigger

## Chamfering Machine, selfpropelling

The automatic chamfering machines cut large welding bevels at an angle between 15° - 80° without any problem. These machines are very resilient and show their strength in any material. Extremely long tool life is achieved through low-speed milling (rpm).



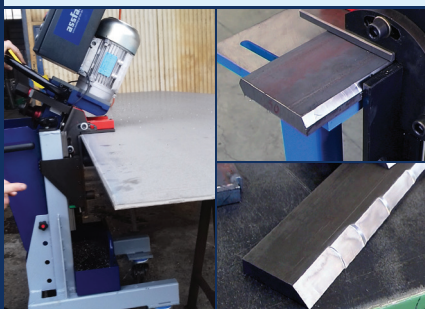
ASO 900 Plus-Bigger



Further accessories can be found in our **Accessory Catalogue**.

### Applications

- ▶ Especially suitable for heavy, long and large-size workpieces.
- ▶ Universal for all materials, suitable for continuous operation
- ▶ Mobile operation of roller carriage or with crane support or stationary



### Features

- ⚙️ Very long tool life and cutting performance, also with stainless steel
- ⚙️ Can be easily set to material thickness, chamfer angle and working height
- ⚙️ Automatic feed adjustment depending on the relevant material from 0 - 1,4 m/min.
- ⚙️ Sturdy cast iron/steel construction, hardened work table with guide rollers
- ⚙️ Working height 800 - 980 mm

### Options

- ⚙️ Speed regulation
- ⚙️ Roughing cutter head RC 16
- ⚙️ Cutter head WSX for workpieces < 8mm and smaller chamfers
- ⚙️ Special version for workpiece thicknesses: 8 - 100 mm, 8 - 200 mm or < 8mm

### Delivery contents

- ⚙️ Allen key 8 and 10 mm
- ⚙️ Electric cable without plug
- ⚙️ Automatic workpiece thickness adjustment with the ASO 900 Plus-Bigger
- ⚙️ Operating manual

### Technical data

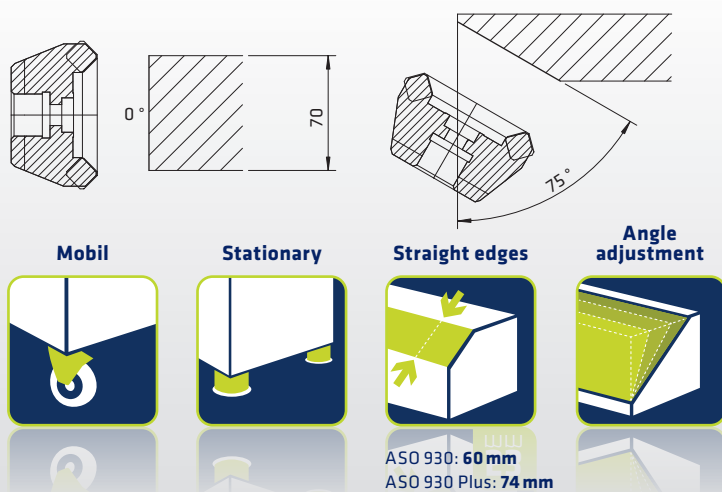
	ASO 900 ⚙️	ASO 900 Plus ⚙️	ASO 900 Plus-Bigger ⚙️
Motor	4.0 kW   750 rpm	4.0 kW   750 rpm	5.5 kW   0-750 rpm
Energy	400 V, 50/60Hz	400 V, 50/60Hz	400 V, 50/60Hz
Maximum chamfer width	55 mm	55 mm	77 mm
Angular adjustment	15° - 60°	15° - 80°	15° - 80°
Automatic feed	0 - 1,4 m/min	0 - 1,4 m/min	0 - 1,4 m/min
Workpiece thickness	8 - 50 mm	8 - 60 mm	4 - 100 mm
Weight	175 kg	215 kg	330 kg
Item no.	42699	63133	64909



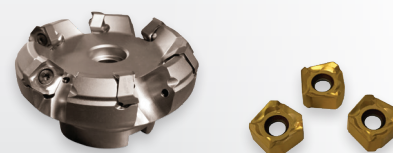
# ASO 930 | ASO 930 Plus

## Chamfering Machine, selfpropelling

With ASO 930 | ASO 930 Plus it is now possible to mill the front and bottom side of the workpiece. The workpiece no longer has to be turned. Extremely long tool life is achieved through low-speed (rpm) milling.



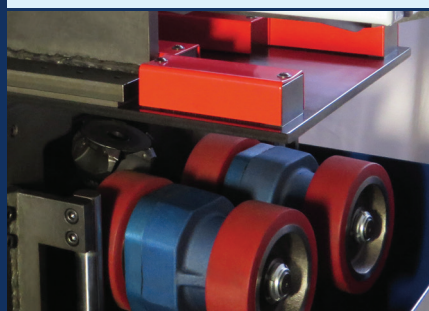
ASO 930 Plus



Further accessories can be found in our **Accessory Catalogue**.

### Applications

- ▶ Particularly for heavy, long and large workpieces
- ▶ Face and bottom milling at an angle of 0°-75° with milling width up to 74 mm
- ▶ Mobile operation of roller carriage or with crane support or stationary



### Features

- ⌚ Easy chamfer and angle adjustment
- ⌚ Automatic feed adjustment depending on the relevant material from 0 – 1.2 m/min.
- ⌚ Sturdy cast iron/steel construction,
- ⌚ Hardened work table with guide rollers
- ⌚ Working height 820 – 970 mm

### Options

- ⌚ Speed regulation
- ⌚ Roughing cutter head RC 16
- ⌚ Cutter head WSX for workpieces < 8mm and smaller chamfers
- ⌚ Special version for workpiece thicknesses: 8 – 100 mm or < 8 mm

### Delivery contents

- ⌚ Allen key 8 and 10 mm
- ⌚ Electric cable without plug
- ⌚ Automatic workpiece thickness adjustment with the ASO 930 Plus
- ⌚ Operating manual

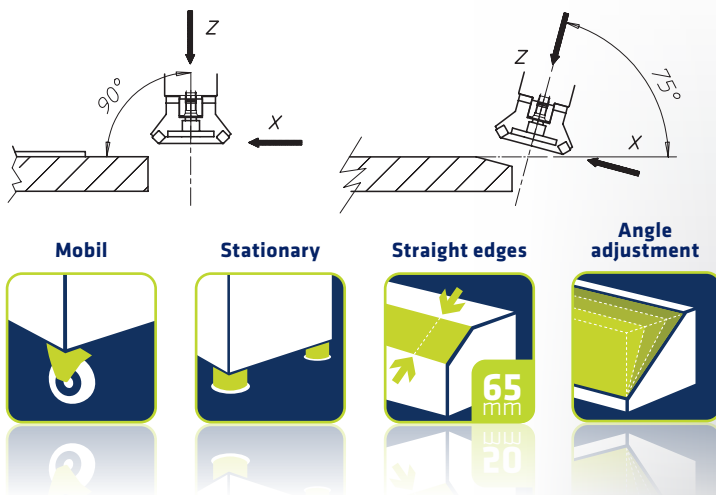
### Technical data

	ASO 930 ⌚	ASO 930 Plus ⌚
Motor	5,5 kW   800 rpm	5,5 kW   0-900 rpm
Energy	400 V, 50/60Hz	400 V, 50/60Hz
Maximum chamfer width	59 mm	74 mm
Angular adjustment	0° – 60°	0° – 75°
Workpiece thickness	8 – 60 mm	8 – 70 mm
Weight	205 kg	380 kg
Item no.	60269	67019

# ASO 910

## Chamfering Machine, selfpropelling

The ASO 910 automatic edge milling machine masters the milling of heels or the resetting of claddings with flying colours. Thanks to its robust version, the machine achieves a chamfer width of up to 50 mm and a chamfer depth of up to 15 mm. The machine is unique in this performance category.



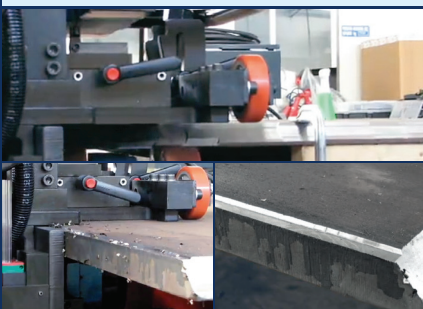
ASO 910



Further accessories can be found in our **Accessory Catalogue**.

### Applications

- ▶ Especially suitable for heavy, long and extensive workpieces
- ▶ This machine is universal for all materials and suitable for continuous operation
- ▶ Shoulder milling or light bevelling at an angle of 90° - 75° regarding the perpendicular
- ▶ Mobile operation of roller carriage or with crane support or stationary



### Features

- ⌚ Feed in X- and Z-axis, as well as easy chamfer angle adjustment
- ⌚ Automatic feed adjustment depending on the relevant material from 0 - 1 m/min.
- ⌚ Sturdy cast iron-steel construction, hardened work table with guide rollers
- ⌚ Working height 930 - 1,120 mm

### Options

- ⌚ Face-, corner- or radius milling cutter can be used, depending on shoulder run-out
- ⌚ Special version for larger plate thicknesses
- ⌚ Special version for workpiece thicknesses: 8 - 220 mm
- ⌚ Extension of the x-axis feed to 100mm

### Delivery contents

- ⌚ Allen key 8 and 10 mm
- ⌚ Electric cable without plug
- ⌚ Automatic workpiece thickness adjustment
- ⌚ Operating manual

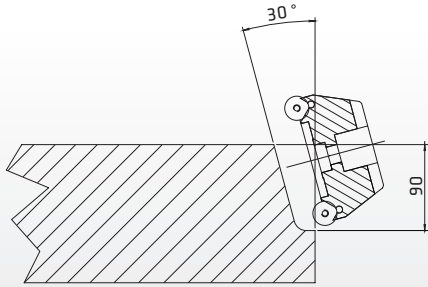
### Technical data

ASO 910	
Motor	5.5 kW   0 - 900 rpm
Energy	400 V, 50/60 Hz
Maximum feed traverse in X- / Z-axes	65 mm / 15 mm
Angular adjustment	90° - 75°
Workpiece thickness	8 - 100 mm
Weight	390 kg
Item no.	64247

# ASO 920

## Chamfering Machine, selfpropelling

Heaviest welding bevels - also in tulip form - can be effectively milled with the ASO 920. This automatic edge milling machine convinces in its performance league.



Mobil



Stationary



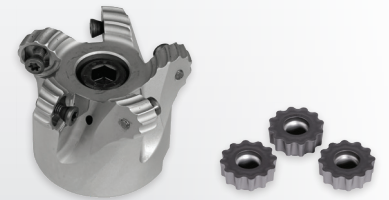
Straight edges



Angle adjustment



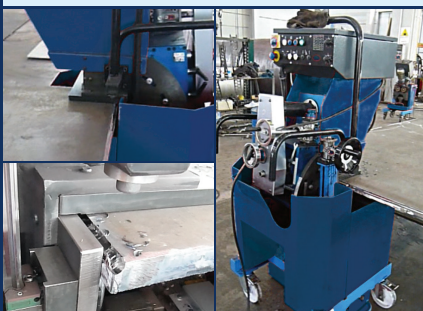
ASO 920



Further accessories can be found in our **Accessory Catalogue**.

### Applications

- ▶ Especially suitable for heavy, long and extensive workpieces
- ▶ This machine is universal for all materials and suitable for continuous operation
- ▶ Milling of tulip shapes at angles of 0° - 35° related to the perpendicular
- ▶ Preferably mobile use on roller carriage, but also with crane support or stationary



### Features

- ⌚ Easy chamfer and angle adjustment
- ⌚ Automatic adjustment of feed-rate and speed (rpm) depending on the relevant material from 0 - 1.2 m/min.
- ⌚ Feed along the Z-axis up to 90 mm possible
- ⌚ Feed along the X-axis up to 90 mm possible
- ⌚ Sturdy cast iron/steel construction, hardened work table with guide rollers
- ⌚ Working height 920 - 1,110 mm

### Delivery contents

- ⌚ Allen key 8 and 10 mm
- ⌚ Electric cable without plug
- ⌚ Automatic workpiece thickness setting
- ⌚ Operating manual

### Technical data

ASO 920 ⌚

Motor	5.5 kW   0 - 900 rpm
Energy	400 V, 50/60Hz
Maximum feed traverse in X- / Z-axes	90 mm
Angular adjustment	0° - 35° regarding the perpendicular
Workpiece thickness	8 - 100 mm
Weight	420 kg
Item no.	58725

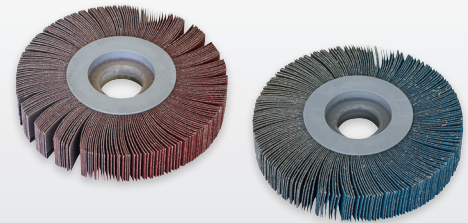
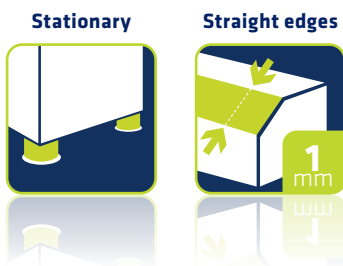
# BKE 550

## Sheet Deburring Machine

The compact sheet deburring machine is suitable for deburring of straight sheet edges - Top and bottom edge in one pass.



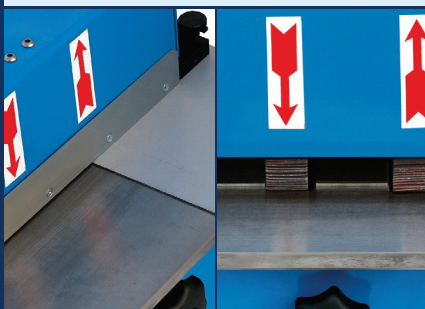
BKE 550



Further accessories can be found in our **Accessory Catalogue**.

### Applications

- ▶ Fast deburring on both sides in one operation
- ▶ For small sheets in horizontal operation and large sheets in vertical operation
- ▶ Universal for all materials from 1 - 5 mm thickness



### Features

- ⌚ Sturdy sustainable sheet construction with extraction device
- ⌚ Grinding wheels adjustable via handwheel
- ⌚ Linear stop guide for sheet thickness adjustment
- ⌚ Easy operation
- ⌚ Speed regulation

### Options

- ⌚ Flap wheels for steel and stainless steel with different grain sizes
- ⌚ Dust extraction

### Delivery contents

- ⌚ Longitudinal stop
- ⌚ 2 flap wheels
- ⌚ Extraction socket
- ⌚ Operating manual

### Technical data

	BKE 550 ⌚
Motor	0.2 kW   1,400 + 2,800 rpm
Table size	550 x 160 mm
Energy	400 V, 50 Hz
Maximum chamfer width	1 mm
Sheet thickness	1 - 5 mm
Dimensions (L×W×H)	550 × 380 × 400 mm
Weight	38 kg
No.	45373



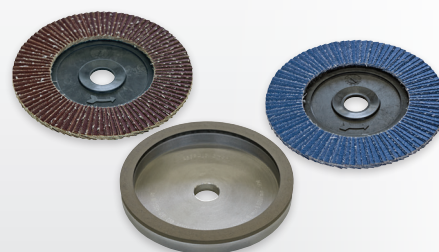
# AF 165

## Deburring machine with Sanding Disk

Its specialty includes the removal of saw burrs and heavy roughing burrs so that workpieces can be further processed and are safe to use. Fast, cost-effective edge grinding is achieved with long-life flap wheels, CBN or diamond grinding wheels.



AF 165

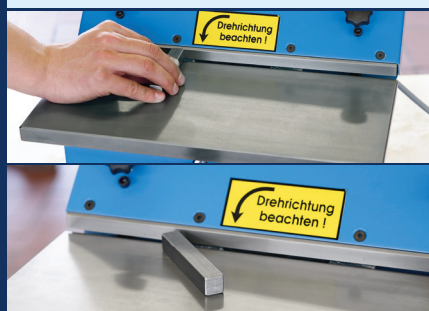


Further accessories can be found in our **Accessory Catalogue**.



### Applications

- ▶ Minimum workpiece thickness 3 mm
- ▶ Applicable for steel, aluminium, brass, copper, synthetic material, from soft synthetic material to acrylic glass, wood and much more
- ▶ For hardened steel CBN-wheels
- ▶ For carbide metal diamond wheels



### Features

- ✔ Easy operation
- ✔ Uncomplicated tool change
- ✔ Stepless chamfer adjustment
- ✔ Hardened guide rails
- ✔ Clean working place due to extraction device

### Options

- ✔ Table extension
- ✔ Dust extraction
- ✔ Flap disks for steel or stainless steel with different grain sizes
- ✔ CBN- and diamond grinding wheels

### Delivery contents

- ✔ Flap discs with special bond
- ✔ Extraction socket
- ✔ Operating manual

### Technical data

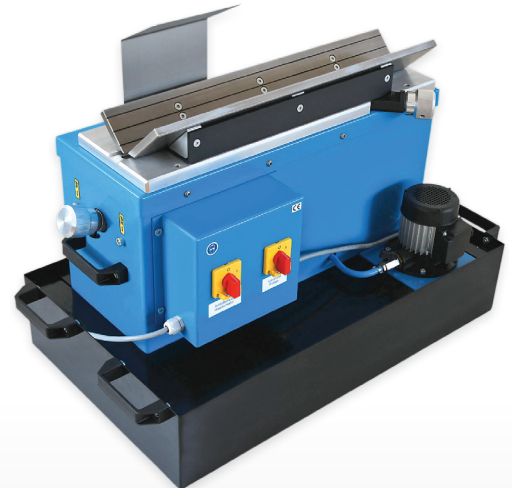
AF 165

Motor	0.37 kW   2,800 rpm
Table size	180 x 370 mm
Energy	400 V, 50/60 Hz
Maximum chamfer width	1 mm
Flap disc	ø 165 mm
Dimensions (L×W×H)	370 x 520 x 320 mm
Weight	24 kg
Item no.	19281

# KSM 125 | KSM 130

## Chamfer Grinding Machine for Straight Edges

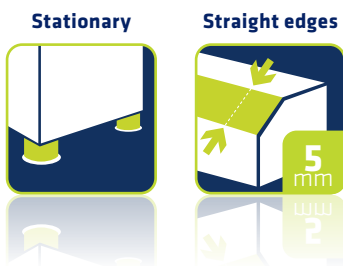
The grinding machines are suitable for precise deburring and chamfering of straight edges on hard materials. deliverable with wet-grinding unit or dust extractor.



KSM 130



Further accessories can be found in our **Accessory Catalogue**.



### Applications

- ▶ **Hardened and hard materials between 40-65 HRC**

### Features

- ☑ Sturdy construction with grinding wheel adjusting screw
- ☑ Water cooling provides workpiece and grinding disc
- ☑ V-Prism with micrometer chamfer adjustment
- ☑ Axial grinding wheel adjustment
- ☑ Sturdy conical 2-zone grinding disc for strong material removal

### Options

- ☑ Mobile undercarriage
- ☑ Dust extraction (only for KSM 125)

### Delivery contents

- ☑ Standard accessories
- ☑ Grinding disc
- ☑ Extraction socket (only for KSM 125)
- ☑ Water tub and pump (only for KSM 130)
- ☑ Operating manual



### Technical data

	KSM 125 ☑	KSM 130 ☑
Motor	0.75 kW   2,890 rpm	0.75 kW   2,890 rpm
Energy	400 V, 50/60 Hz	400 V, 50/60 Hz
Vc	700 - 1,100 m/min	700 - 1,100 m/min
Maximum chamfer width	5 mm	5 mm
Grinding disk, conical	ø min. 80 mm, max. 125 mm	ø min. 80 mm, max. 125 mm
Dimensions (LxWxH)	640 × 300 × 400 mm	700 × 650 × 400 mm
Weight	85 kg	85 kg
Item no.	15990	60715

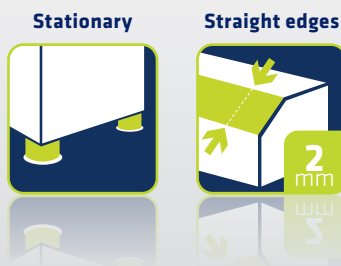
# Speedy Prisma 210-PSL

## Deburring machine with Sliding Carriage

This deburring machine is simple and sturdy table machine equipped with a prismatic slide for efficient and precise machining of longitudinal edges down to smallest workpieces.



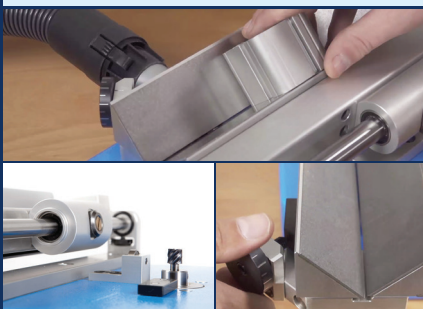
Speedy Prisma 210-PSL



Further accessories can be found in our **Accessory Catalogue**.

### Applications

- ▶ Burr-free chamfering of small precision parts from 1 mm thickness in almost polished precision
- ▶ Universal for all materials and suitable for continuous operation
- ▶ VHM-milling cutters for all non-hardened workpieces
- ▶ CBN-grinding pencil for hardened steel
- ▶ Diamond grinding pencil for carbide metal and glass



### Features

- ⌚ Surface protecting precision chamfers up to 2 mm (no scratches on the workpiece!)
- ⌚ Easy operation
- ⌚ Fast tool change
- ⌚ Speed control for processing different materials
- ⌚ Bearing supported sliding carriage for chatter-free milling

### Options

- ⌚ Extraction socket
- ⌚ Extraction device

### Delivery contents

- ⌚ Allen key 2.5 mm
- ⌚ Prism cutter
- ⌚ Operating manual

### Technical data

Speedy Prisma 210-PSL ⌚

Motor	0.14 kW   10,000 – 30,000 rpm
Energy	230 V, 50 Hz
Maximum chamfer width	2 mm
Dimensions (LxWxH)	320 × 200 × 180 mm
Weight	8.5 kg
Item no.	46069

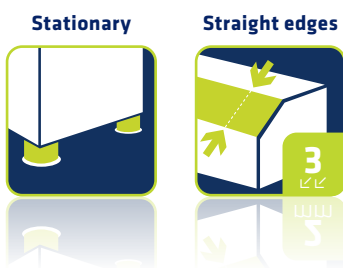
# FS 5

## Deburring machine with V-Prism

The FS 5 is a sturdy and extremely cost-effective chamfering machine with cutter head. Straight edges of cube-shaped workpieces can be easily chamfered. The V-prism is foldable for insert change.



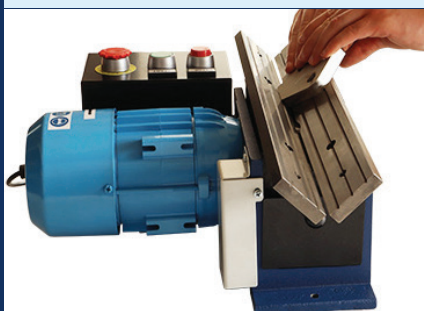
FS 5



Further accessories can be found in our **Accessory Catalogue**.

### Applications

- ▶ **Minimum workpiece thickness 3 mm**
- ▶ **Clean and burr-free chamfering in a section**
- ▶ **Suitable for almost all materials**
- ▶ **Duty cycle approx. 30% /h**



### Features

- Ⓛ Easy handling
- Ⓛ Sturdy guide rails
- Ⓛ Fast change of cutter head and cutting inserts

### Delivery contents

- Ⓛ Cutter head with cutting inserts
- Ⓛ Swarf drawer
- Ⓛ Operating manual

### Technical data

FS 5 Ⓛ

Motor	0.37 kW   2,800 rpm
Energy	230 V, 50/60 Hz
Maximum chamfer width	3 mm
Angular adjustment	45°
Dimensions (LxWxH)	400 × 325 × 170 mm
Weight	19 kg
Item no.	41408



# ASO 850-K

## Deburring machine with V-Prism for straight edges

The stable and simple edge milling machine is designed for deburring and edge milling of small to large workpieces from 2mm thickness. Thanks to the optimized interaction of cutter head and inserts, the machine provides chatter-free, clean and constant chamfering performance up to 3mm x 45° in one cut.



ASO 850-K with undercarriage

Stationary



Straight edges



ASO 850-K with feed module



Further accessories can be found in our **Accessory Catalogue**.

### Applications

- ▶ For visually beautiful 45° chamfers
- ▶ Universal for robust continuous operation
- ▶ Longer tool life due to automatic workpiece feed
- ▶ Higher work safety due to automatic workpiece feed



### Features

- ⌚ Chamfer adjustment via micrometer screw
- ⌚ Effortless chamfering due to low cutting pressure
- ⌚ Sturdy cast iron construction with swarf drawer
- ⌚ Wear-resistant, hardened and ground guide rails
- ⌚ Wide variety of different inserts for various materials

### Options

- ⌚ Mobile undercarriage
- ⌚ Automatic feed
- ⌚ Corundum- or CBN grinding disc for hardened workpieces
- ⌚ Infinitely variable speed regulation 0 – 10,000 rpm

### Delivery contents

- ⌚ Allen key 4 and 8 mm
- ⌚ Operating manual

### Technical data

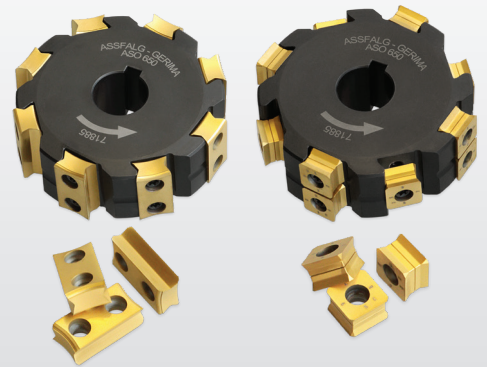
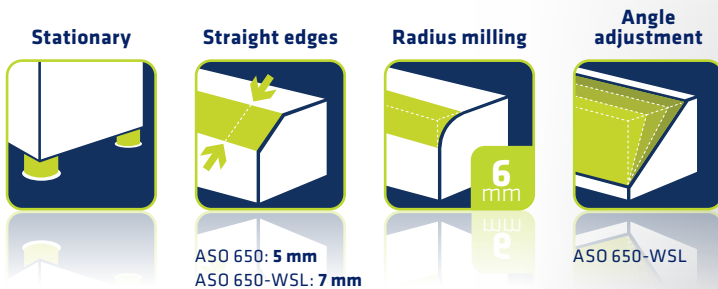
ASO 850-K ⌚

Motor	0.75 kW   0 – 6,000 rpm
Energy	230 V, 50/60 Hz
Maximum chamfer width	5 mm
Angular adjustment	45°
Dimensions (LxWxH)	640 × 450 × 540mm
Weight	57 kg
Item no.	67273

# ASO 650 | ASO 650-WSL

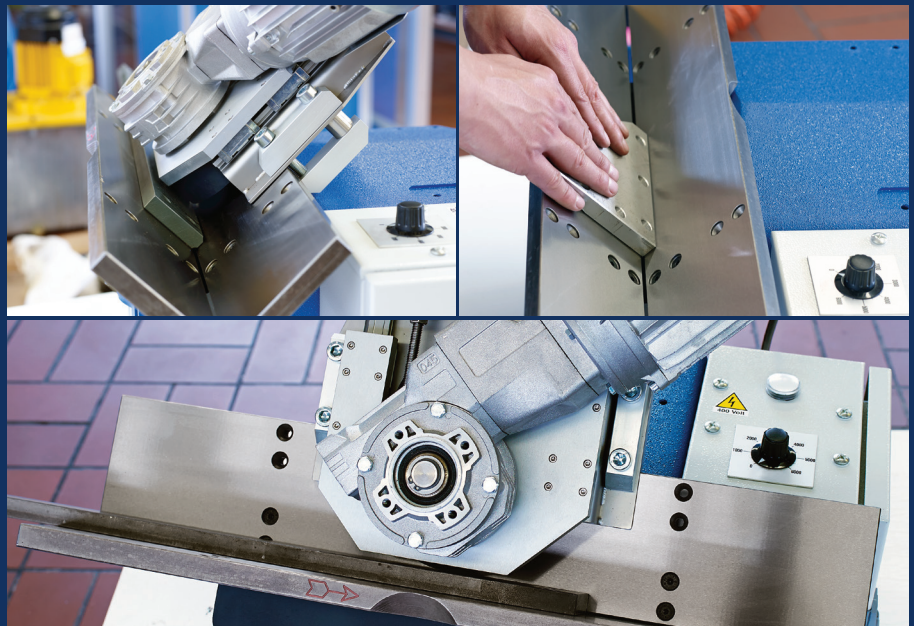
## Chamfering Machine with V-prism for Straight Edges

Deburring and chamfering of big workpieces is an easy job. Rounding of edges in use with radius inserts is also possible. Speed control is very useful when processing aluminum or stainless steel.



### Applications

- ▶ Minimum workpiece thickness 2 mm
- ▶ Clean and burr-free chamfering
- ▶ Suitable for sturdy continuous operation
- ▶ For preparing welding seams
- ▶ For short or thin workpieces below 5mm, the guide rails must be rotated and used with a 2mm cutting gap





ASO 650

### Professional advantages

- ▶ Axial adjustment of the cutter head for full utilization of the cutting inserts
- ▶ Chamfer adjustment by micrometer screw
- ▶ For continuous operation

Further accessories can be found in our **Accessory Catalogue**.

### Features

- ✔ Sturdy cast iron construction with swarf drawer
- ✔ Wear-resistant, hardened and ground guide rails
- ✔ Precise chamfer adjustment by micrometer screw
- ✔ Various cutting inserts for different materials
- ✔ Long useful life due to sturdy square cutting inserts and circumferential cut

### Options

- ✔ Automatic feed
- ✔ Radius cutting inserts R1,2-6 mm

### Delivery contents

- ✔ Allen key 4 mm
- ✔ Side-and-face milling cutter KX/DL equipped with cutting inserts
- ✔ Operating manual

### Technical data

	ASO 650 ⚡	ASO 650-WSL ⚡
Motor	0.75 kW   2,800 rpm	0.95 kW   0 – 6,000 rpm
Energy	400 V, 50/60 Hz	400 V, 50/60 Hz
Maximum chamfer width	5 mm	7 mm
Angular adjustment	45°	15° – 45°
Dimensions (LxWxH)	400 × 500 × 300 mm	400 × 500 × 300 mm
Weight	52 kg	55 kg
Item no.	10229	10230



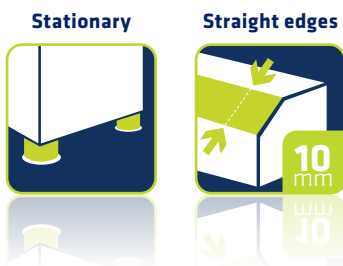
ASO 650-WSL



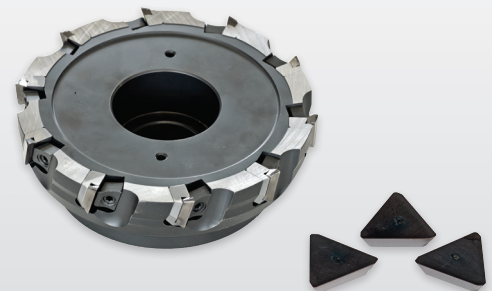
# ASO 160-M | ASO 160-MSL

## Chamfering Machine with V-prism for Straight Edges

Chamfering thin sheets, solid material or pipe profiles is no challenge for the machines. Whether small parts or bar material, a consistently good surface quality is milled. This makes them indispensable in all metalworking single-part and series production.

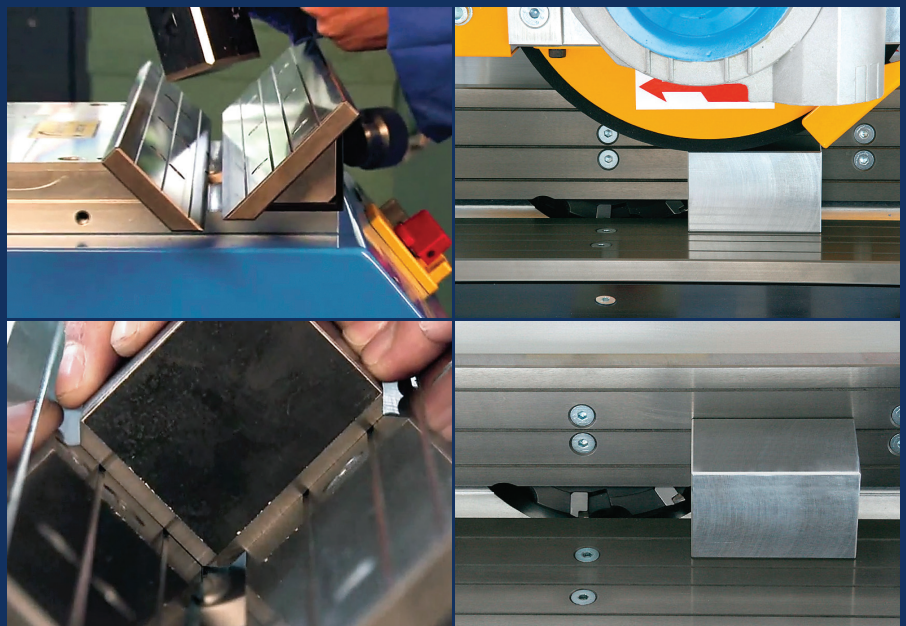


Further accessories can be found in our **Accessory Catalogue**.



### Applications

- ▶ Minimum workpiece thickness 1 mm
- ▶ Can be used for steel, max. 1,000 N/mm<sup>2</sup>, aluminum, brass, copper, plastic, from soft plastic to acrylic glass, wood and much more
- ▶ Deburring workpieces up to welding seam preparation
- ▶ For chamfering without rest ridge (cutter edge)







ASO 160-MSL with feed module and undercarriage

### Professional advantages

- ▶ Sharp-edged chamfering possible i.e. a 3 mm x 45° chamfer can be applied to a 3 mm thick workpiece
- ▶ Small workpieces can be easily and rapidly worked on by hand
- ▶ Longer workpieces are chamfered by automatic feed
- ▶ Consistent high surface quality

### Features

- ✔ Chamfer adjustment by micrometer screw
- ✔ Speed regulation for the ASO 160-MSL
- ✔ Easy tool change
- ✔ V-prism for ideal guidance of the workpieces
- ✔ Hardened and ground guide rails
- ✔ Soft cutting pressure

### Options

- ✔ Mobile undercarriage with big rubber rollers and integrated swarf drawer
- ✔ Automatic feed for series production and machining of flat material
- ✔ V-roller guideways for extending the guide rails

### Delivery contents

- ✔ Allen key 5 and 6 mm
- ✔ Torx key T 20
- ✔ Aluminium block for machining of faces
- ✔ Plane cutter head with cutting inserts
- ✔ Swarf ejection pipe (with ASO 160-MSL only)
- ✔ Operating manual

### Technical data

	ASO 160-M	ASO 160-MSL
Motor	1.5 kW   2,800 rpm	1.5 kW   1,000 – 4,000 rpm
Energy	400 V, 50 Hz	400 V, 50 Hz
Maximum chamfer width	10 mm	10 mm
Angular adjustment	45°	45°
Dimensions (LxWxH)	450 × 380 × 400 mm	450 × 380 × 400 mm
Weight	64 kg	65 kg
Item no.	35035	35141

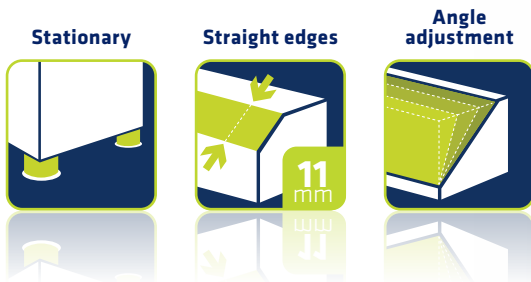


ASO 160-MSL with undercarriage

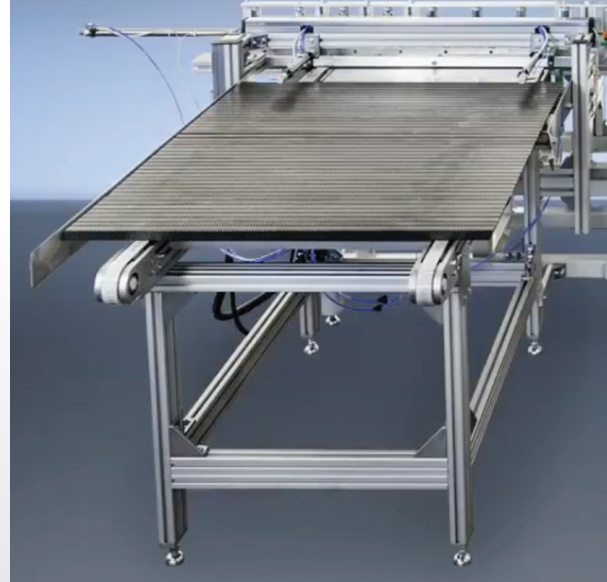
# WKF 170

## Chamfering Machine, angle adjustable

The perfect machine for chamfering small to mid-size workpieces and bar material. Thanks to its angle adjustment from 15° – 60°, it is mainly used for welding seam preparation.



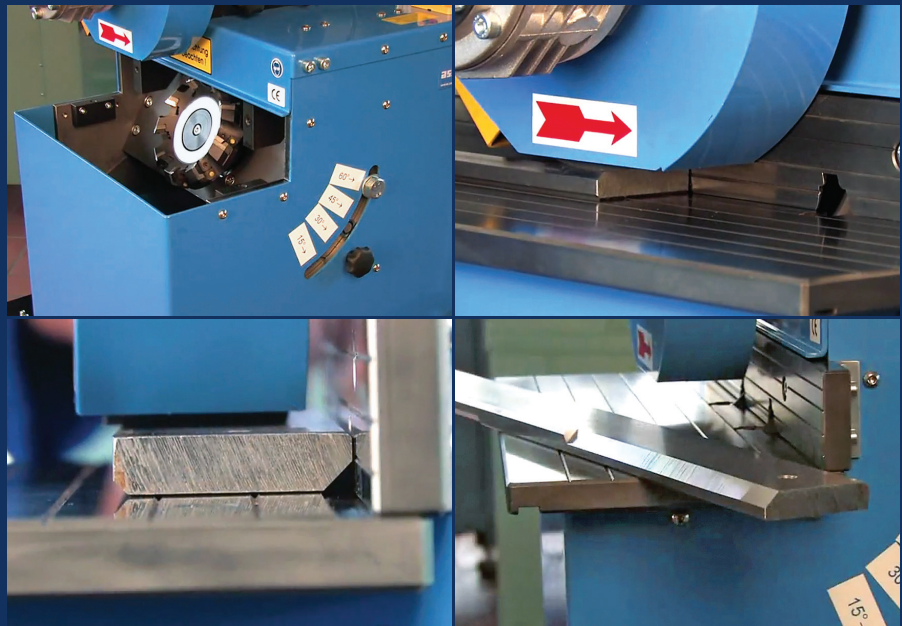
## Automatic Chamfering Machine ZE 2000/2 from ASSFALG

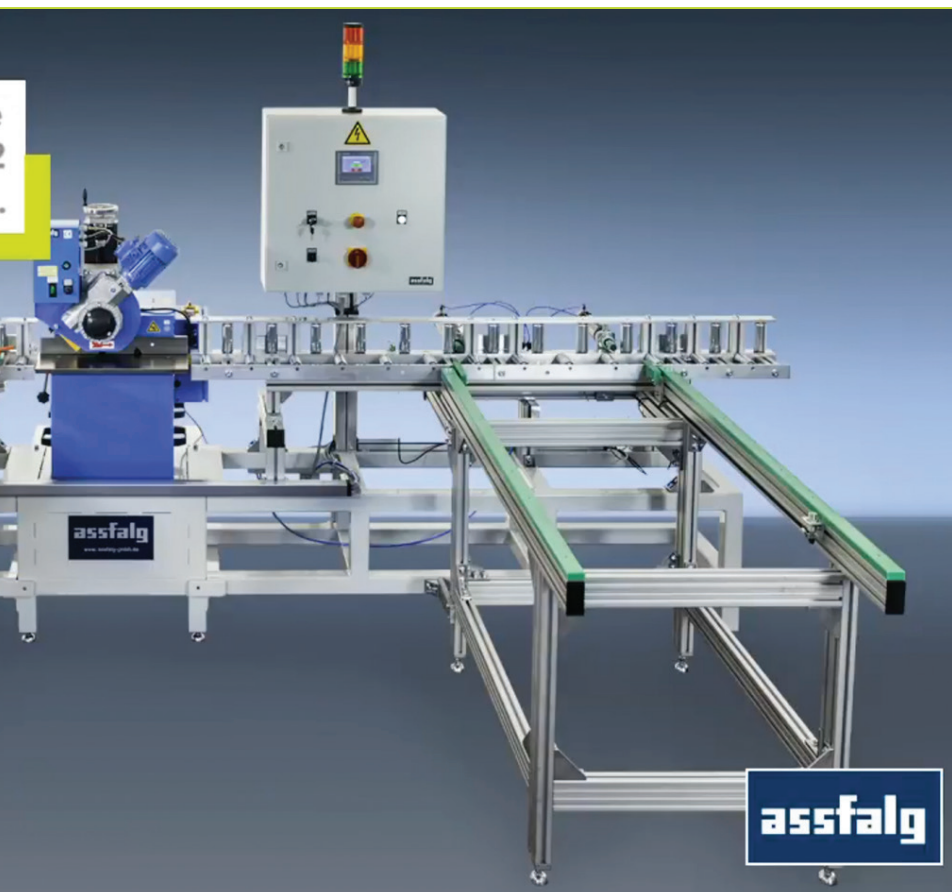


WKF 170 as automatic chamfering machine with feed module and roller guideway

### Applications

- ▶ Minimum workpiece thickness 1 mm
- ▶ Can be used for steel, max. 1,000 N/mm<sup>2</sup>, aluminum, brass, copper, plastic, from soft plastic to acrylic glass, wood and much more
- ▶ Deburring workpieces up to welding seam preparation

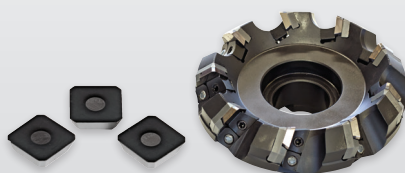




### Professional advantages

- ▶ Simple and fast angle adjustment
- ▶ Consistent high surface quality
- ▶ Automatic feed facilitates chamfering
- ▶ Sharp-edged chamfering possible i.e. a 5 mm x 45° chamfer can be applied to a 5 mm thick workpiece

Further accessories can be found in our **Accessory Catalogue**.



### Features

- ⌚ Angle adjustment from 15° – 60° (Quick adjustment with plug-in bolt in 5° steps)
- ⌚ Chamfer adjustment by micrometer button
- ⌚ Speed control for processing different materials
- ⌚ Easy tool change
- ⌚ Hardened and polished guide rails
- ⌚ Soft cutting pressure

### Options

- ⌚ Mobile undercarriage with big rubber rollers and integrated swarf drawer
- ⌚ Lateral stop for processing the front side
- ⌚ Longitudinal stop for secure guidance of small series production parts
- ⌚ Automatic feed for single-part and series production and processing bar materials
- ⌚ Roller conveyors for extending the guide rails

### Delivery contents

- ⌚ Torx key T 25
- ⌚ Plane cutter head with cutting inserts
- ⌚ Operating manual

### Technical data

Motor	3.0 kW   1,000 – 4,000 rpm
Energy	400 V, 50/60 Hz
Maximum chamfer width	11 mm
Angular adjustment	15° – 60°
Dimensions (LxWxH)	500 × 500 × 550 mm
Tabletop (LxW)	500 × 180 mm
Weight	103 kg
Item no.	54307

WKF 170 ⌚



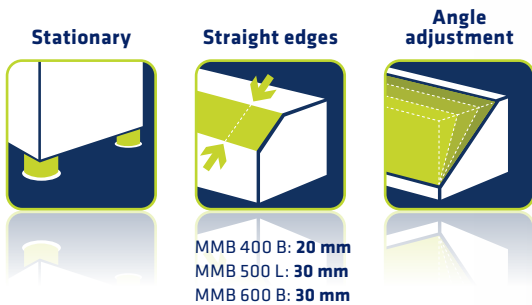
WKF 170 with feed module and undercarriage



# MMB 400 B | MMB 500 L | MMB 600 C

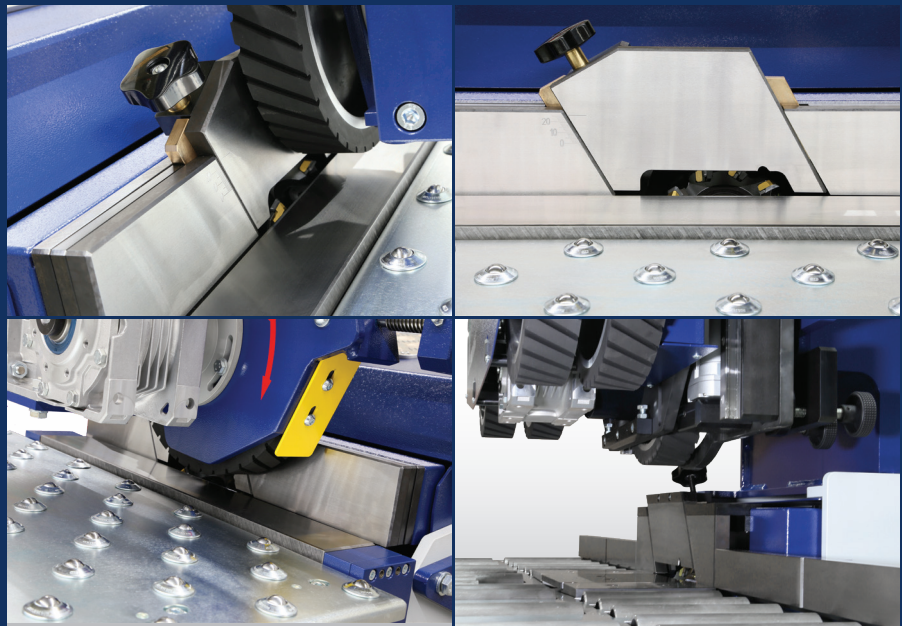
## Chamfering Machine, angle adjustable

A high stock removal rate and chamfering quality characterize these machines. They are mainly used for weld chamfers from 15°-65° and also for optical chamfers on straight edges, tube ends and blanks.



### Applications

- ▶ Minimum workpiece thickness 3 mm
- ▶ Can be used for steel, max. 1,000 N/mm<sup>2</sup>, aluminum, brass, copper, plastic, from soft plastic to acrylic glass, wood and much more
- ▶ Deburring workpieces up to welding seam preparation
- ▶ Especially suitable for series production





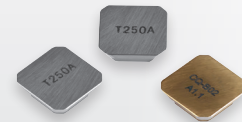


### Professional advantages

- ▶ Precise work guidance
- ▶ Consistent high surface quality
- ▶ Automatic work guidance
- ▶ Big supporting table

MMB 600 C

MMB 500 L



Further accessories can be found in our **Accessory Catalogue**.

### Features

- ☑ Angle adjustment from 15° – 65°
- ☑ Speed control for processing different materials
- ☑ Controllable feed-rate
- ☑ Minimum quantity lubrication system
- ☑ MMB 600 C motorized feed height adjustment by button control
  - With material thickness display
  - With 5 rubber-coated feed wheels

### Options

- ☑ Cutter head with round cutting inserts
- ☑ Special designs for blanks and tubes
- ☑ Roller guideways
- ☑ 7.5 kW motor (for MMB 400 B only)
- ☑ Special tables for MMB 400 B (L x W): 1250 x 650 mm or 1600 x 650 mm

### Delivery contents

- ☑ Plane cutter head with cutting inserts
- ☑ Minimum quantity lubrication system
- ☑ Torx key T 15
- ☑ Operating manual

### Technical data

	MMB 400 B ☑	MMB 500 L ☑	MMB 600 C ☑
Motor	5.5 kW   2,000 – 6,000 rpm	7.5 kW   2,000 – 6,000 rpm	7.5 kW   2,000 – 6,000 rpm
Energy	400 V, 50/60 Hz	400 V, 50/60 Hz	400 V, 50/60 Hz
Maximum chamfer width	20 mm	30 mm	30 mm
Angular adjustment	25° – 55° / 30° – 60° / 35° – 65°	20° – 50° / 25° – 55° / 30° – 60°	20° – 50° / 25° – 55° / 15° – 60° (Digital display)
Maximum work piece thickness	2-100 mm	5-100 mm	5-190 mm
Dimensions (LxWxH)	900 x 1,500 x 1,800 mm	1,510 x 1,490 x 1,750 mm	1,490 x 1,520 x 1,830 mm
Tabletop (LxW)	750 x 490 mm	1,490 x 700 mm	1,490 x 700 mm
Weight	540 kg	770 kg	1,050 kg
Item no.	69203	62871	63796

# Speedy Contour 270-K | Speedy Contour 270-KSL | Speedy Contour 320-K | Speedy Contour 320-KSL

## Deburring machine for Contours

The stationary edge- and contour milling machines are perfect for machining angular and round workpieces with plane inner- and outer contours. They are compact and handy tabletop machines finding their ideal use alongside CNC machines.



### Applications

- ▶ For precise deburring and chamfering of inner- and outer edges on flat workpieces
- ▶ Can be used for steel, hardened steel, aluminium, brass, copper, plastic, from soft plastic to acrylic glass, wood and much more
- ▶ Suitable for continuous operation





Further accessories can be found  
in our **Accessory Catalogue**.

### Professional advantages

- ▶ Ideal for chamfers up to 1 mm x 45°
- ▶ Suitable for processing small to medium-sized workpieces
- ▶ Low setup times with maximum flexibility
- ▶ Zero point clamping

### Features

- ✔ Easy operation
- ✔ Fast tool change
- ✔ Speed control (only with Speedy Contour 270-KSL and Speedy Contour 320-KSL)
- ✔ Chamfer angle can be changed due to contour cutter with different point angles

### Options

- ✔ Guide finger, radius- and chamfer cutter with guide ball bearing
- ✔ Attachment prism for processing of straight edges
- ✔ Slug remover set for face milling of cut-off rotary slugs up to max. Ø 1.5 mm
- ✔ Extraction socket
- ✔ Extraction device with automatic switch-on
- ✔ Special version for stainless steel processing

### Delivery contents

- ✔ Allen key 2.5 mm
- ✔ Cold-device cable
- ✔ Insert ring with borehole Ø 8 mm
- ✔ Operating manual

### Technical data

	Speedy Contour 270-K	Speedy Contour 270-KSL	Speedy Contour 320-K	Speedy Contour 320-KSL
Motor	0.14 kW 21,000 rpm	0.14 kW 12,000-32,000 rpm	0.14 kW 21,000 rpm	0.14 kW 12,000-32,000 rpm
Energy	230 V, 50 Hz	230 V, 50 Hz	230 V, 50 Hz	230 V, 50 Hz
Maximum chamfer width	2 mm	2 mm	2 mm	2 mm
Guide ball bearing	min. Ø 3 mm	min. Ø 3 mm	min. Ø 3 mm	min. Ø 3 mm
Dimensions (LxWxH)	270 × 170 × 120 mm	270 × 170 × 130 mm	320 × 200 × 140 mm	320 × 200 × 140 mm
Weight	8.6 kg	9 kg	12 kg	13 kg
Item no.	1011	1053	961	938

# KKE 1 | KKE 2

## Deburring machine for Contours

Straight edges, bores, slotted holes and slots are chamfered precisely, quickly and easily. The prism attachment for machining straight edges rounds off the complete package. They are a great helper at a small price.



### Applications

- ▶ Minimum workpiece thickness 1 mm
- ▶ Can be used for steel, hardened steel, aluminium, brass, copper, plastic, from soft plastic to acrylic glass, wood and much more
- ▶ Chamfering or rounding of external and internal contours
- ▶ Not for permanent use due to carbon-brush motor with duty cycle 50 % /h.
- ▶ Suction only with prism application







Further accessories can be found in our [Accessory Catalogue](#).

### Professional advantages

- ▶ Ideal for chamfers up to 2 mm x 45°
- ▶ Internal- and external contours can be chamfered and rounded
- ▶ Dimensional accuracy due to ball bearing guide or guide ruler
- ▶ No chatter marks
- ▶ Very good tool life of the solid carbide cutters

### Features

- ✔ Compact, handy tabletop unit next to the CNC milling- and turning machine
- ✔ Precise chamfer adjustment
- ✔ Speed control for processing different materials
- ✔ Chamfer angle can be changed due to contour cutter with different point angles
- ✔ Fast tool change

### Options

- ✔ Prism attachment for straight edges
- ✔ Guide finger for the use of tapered contour cutters
- ✔ Extraction device with automatic switch-on (only for KKE 2)

### Delivery contents

- ✔ Stop ruler, box wrench 17 mm, union nut, Allen key 3 mm, collet  $\varnothing$  6 mm
- ✔ Open-ended wrench 14 mm
- ✔ Insert ring with borehole  $\varnothing$  8 mm
- ✔ Prism with suction socket, insert ring with borehole  $\varnothing$  12 mm, collet  $\varnothing$  8 mm, allen key 5 mm (only for KKE 2)
- ✔ Operating manual

### Technical data

	KKE 1	KKE 2
Motor	0.6 kW   8,000 – 24,000 rpm	0.6 kW   8,000 – 24,000 rpm
Energy	230 V, 50/60 Hz	230 V, 50/60 Hz
Maximum chamfer width	3 mm	3 mm
Guide ball bearing	min. $\varnothing$ 3 mm	min. $\varnothing$ 3 mm
Dimensions (LxWxH)	300 x 250 x 320 mm	300 x 250 x 360 mm
Weight	21.3 kg	24.2 kg
Item no.	22129	29642



KKE 2 (with prism)

# ASO 600-ASL

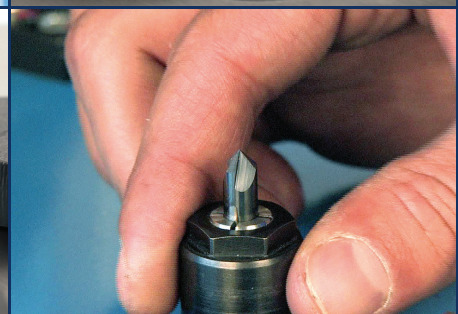
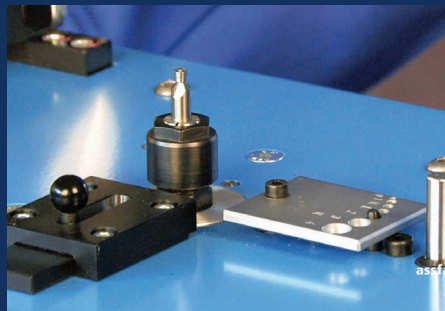
## Deburring machine for Contours

The small, compact deburring machine mills or rounds edges precisely, safely and with ease. It leaves chatter-free chamfers and radii on angular and round workpieces made of a wide variety of materials. Its universality makes it unique.



### Applications

- ▶ Minimum workpiece thickness 1 mm
- ▶ Can be used for steel, hardened steel, aluminium, brass, copper, plastic, from soft plastic to acrylic glass, wood and much more
- ▶ Chamfering or rounding of external and internal contours
- ▶ For continuous operation





### Professional advantages

- ▶ Brush-less motor for continuous operation
- ▶ Tool change within a few seconds
- ▶ Zero point clamping
- ▶ Extraction socket

ASO 600-ASL  
with stop ruler



Further accessories can be found  
in our [Accessory Catalogue](#).



### Features

- ✔ Compact, handy tabletop unit next to the CNC milling- and turning machine
- ✔ Precise chamfer adjustment
- ✔ Chamfer angle can be changed due to contour cutter with different point angles
- ✔ Fast tool change with zero point clamping
- ✔ Hardened table with extraction socket


### Options

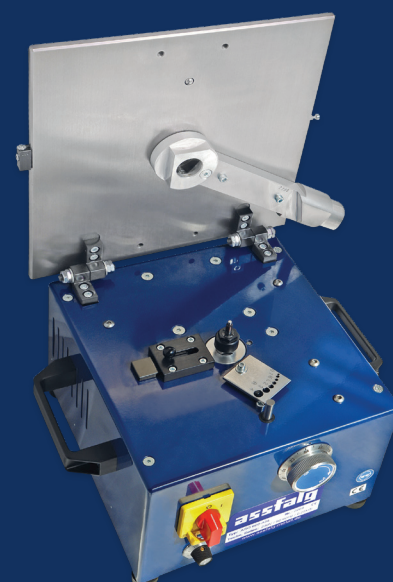
- ✔ Prism attachment for straight edges
- ✔ Guide finger for the use of tapered contour cutters
- ✔ Extraction device with automatic switch-on
- ✔ Special cutters on request

### Delivery contents

- ✔ Stop ruler
- ✔ Open-ended wrench SW 17
- ✔ Insert ring with borehole  $\varnothing$  12 mm
- ✔ Collet  $\varnothing$  6 mm
- ✔ Union nut
- ✔ Operating manual

### Technical data

		ASO 600-ASL 
Motor		0.25 kW   9,000-21,000 rpm
Energy		230 V, 50/60 Hz
Maximum chamfer width		3 mm
Guide ball bearing		min. $\varnothing$ 3 mm
Dimensions (LxWxH)		280 x 300 x 205 mm
Weight		21.3 kg
Item no.		68674



ASO 600-ASL



# KKF 4-SL

## Chamfering Machine for Contours

The spindle bearings installed under preload give the KKF 4-SL highly accurate concentricity. Both solid carbide cutters and milling cutters with inserts can be used to achieve excellent tool life.



### Applications

- ▶ **Minimum workpiece thickness 1 mm**
- ▶ **Can be used for steel, hardened steel, aluminium, brass, copper, plastic, from soft plastic to acrylic glass, wood and much more**
- ▶ **Chamfering or rounding of external and internal contours**
- ▶ **Automatic feed for bigger workpieces**







KKF 4-SL with undercarriage

Further accessories can be found in our **Accessory Catalogue**.

### Professional advantages

- ▶ Big supporting table
- ▶ Very good concentricity
- ▶ Can be used in continuous operation due to belt transmission
- ▶ Tool change within a few seconds
- ▶ Extraction socket
- ▶ Milling cutter infeed through parallel table plate adjustment

### Features

- ✔ Precise chamfer adjustment by micrometer screw
- ✔ Chamfer angle can be changed due to contour cutter with different point angles
- ✔ Fast tool change
- ✔ Wide selection of cutters
- ✔ Infinitely variable speed regulation
- ✔ Hardened machine table with extraction socket


### Options

- ✔ Mobile undercarriage with big rubber rollers
- ✔ Prism attachment for straight edges
- ✔ Stop ruler
- ✔ Guide finger for the use of tapered contour cutters
- ✔ Extraction device
- ✔ Automatic feed
- ✔ Insert milling cutter with guide ball bearing from  $\varnothing 10$  mm

### Delivery contents

- ✔ Collet wrench
- ✔ Insert ring with borehole  $\varnothing 30$  mm
- ✔ Collet  $\varnothing 6$  mm, 8 mm, 10 mm, and 12 mm
- ✔ Union nut
- ✔ Operating manual

### Technical data

KKF 4-SL 

Motor	0.55 kW   6,000 – 26,000 rpm
Energy	400 V, 50-60 Hz
Maximum chamfer width	4 mm
Guide ball bearing	min. $\varnothing 6$ mm
Dimensions (LxWxH)	490 × 340 × 430 mm
Tabletop	400 × 280 mm
Weight	55.8 kg
Item no.	63368



KKF 4-SL

# KKF 3-SL

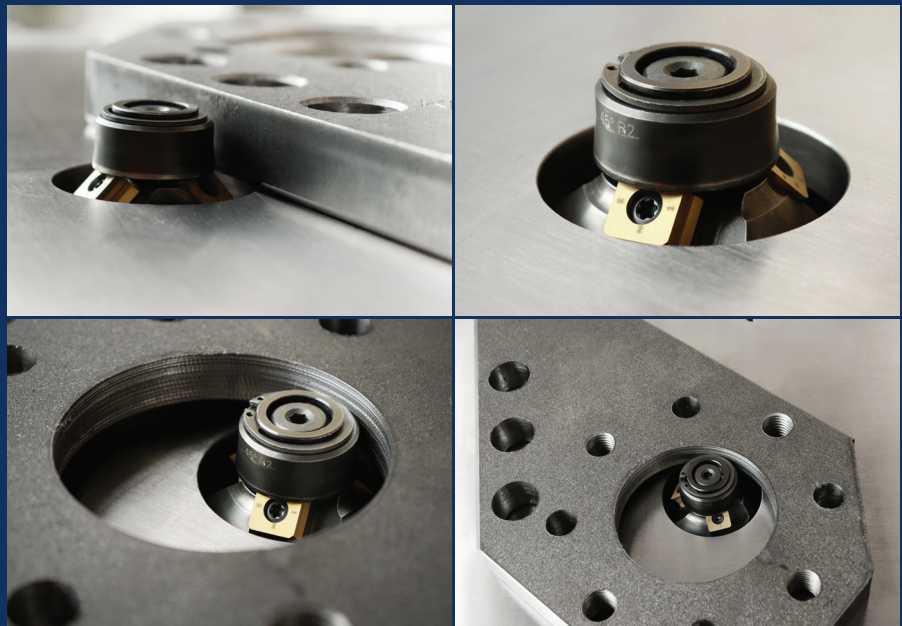
## Chamfering Machine for Contours

This machine is our most powerful edge and contour milling machine and has the largest worktable. Its robust insert milling cutters are ideal for machining larger and heavier workpieces.



### Applications

- ▶ Minimum workpiece thickness 2 mm
- ▶ Can be used for steel, max. 1,000 N/mm<sup>2</sup>, aluminum, brass, copper, plastic, from soft plastic to acrylic glass, wood and much more
- ▶ Chamfering or rounding of external and internal contours





### Professional advantages

- ▶ Big working table
- ▶ Sturdy insert milling cutter
- ▶ For continuous operation
- ▶ Milling cutter infeed through parallel table adjustment
- ▶ Extraction socket

KKF 3-SL with feed module and undercarriage



Further accessories can be found in our **Accessory Catalogue**.

### Features

- ✔ Precise chamfer adjustment by micrometer screw
- ✔ Chamfer angle can be changed by using various insert milling cutters
- ✔ Fast and easy tool change
- ✔ Speed regulation
- ✔ Hardened machine table with extraction socket

### Options

- ✔ Mobile undercarriage with big rubber rollers
- ✔ Extraction device
- ✔ Stop ruler
- ✔ Milling cutters with cutting inserts and guide ball bearing from  $\varnothing 10$  mm
- ✔ Reducing collar for 12 mm
- ✔ Solid carbide deburring cutter
- ✔ Radius inserts R1,2 - R6 mm
- ✔ Automatic feed

### Delivery contents

- ✔ Allen key 4 mm
- ✔ Torx key
- ✔ Stop ring for the use of insert rings
- ✔ Operating manual

### Technical data

	KKF 3-SL
Motor	1.5 kW   1,000 - 7,500 rpm
Energy	400 V, 50 Hz
Chamfer width	5 mm
Guide ball bearing	min. $\varnothing 6$ mm
Cutter head	15° - 90°
Dimensions (LxWxH)	530 x 380 x 400 mm
Tabletop	520 x 330 mm
Weight	66.9 kg
Item no.	55111



KKF 3-SL

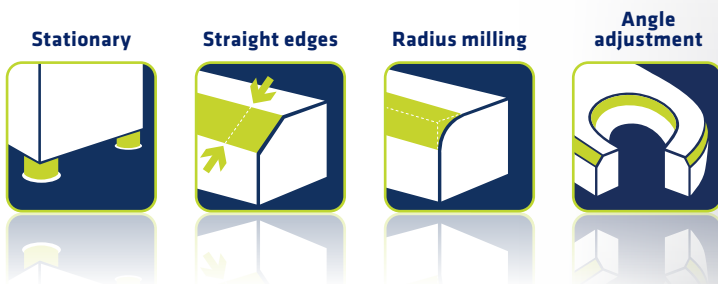
# M1 Surfacer

## Deburring grinding machine, manual

The deburring grinding machine is a manually operated, user-friendly deburring machine that is suitable for various machining processes such as grinding, deburring, edge rounding and polishing of metal surfaces.

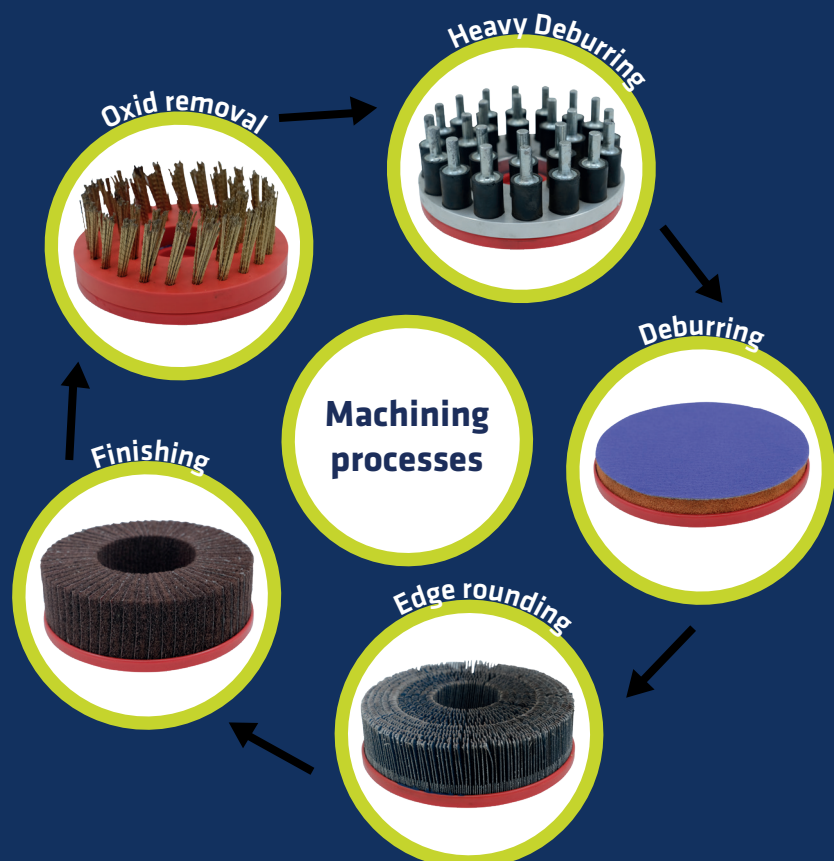
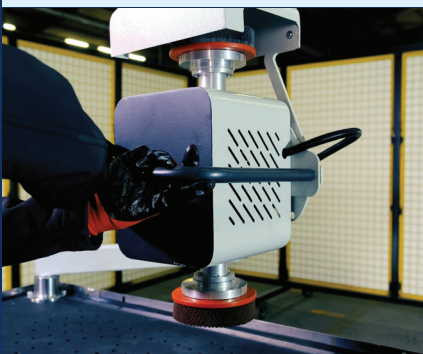
The swivel arm can rotate 180° and enables the simultaneous mounting of two machining discs.

The machine is equipped with a vacuum system that fixes the workpiece on the table.



### Applications

- ▶ Grinding, deburring, rounding edges, and polishing of stainless steel, steel, copper, brass and aluminium parts e.g. laser, stamped and plasma parts







M1-Surfacer

### Professional Advantages

- ▶ 5 machining processes possible in one machine
- ▶ Simultaneous mounting of 2 machining discs
- ▶ Machining of several parts possible
- ▶ Time-saving disc or brush change

### Features

- ⌚ Vacuum fastening system
- ⌚ Mounting of 2 grinding heads possible at the same time
- ⌚ Rotatable grinding head 180°
- ⌚ Easy to operate due to manual and ergonomic handles
- ⌚ A selection of 5 grinding tools / cup brushes available

### Modules

- ⌚ Heavy Deburring: Removal of burrs on the material surface.
- ⌚ Deburring
- ⌚ Edge rounding
- ⌚ Finishing: Surface refinement
- ⌚ Oxid removal

### Options

- ⌚ Extraction unit

### Technische Daten

	M1 Surface ⌚
Energy	400 V, 50/60 Hz
Material thickness	3 - 200 mm
min. material size	80 x 80 mm
Work surface	1300 x 800 mm
max. material width	800 mm
max. material length	1500 mm
Dimensions (LxWxH)	1300 x 800 x 1750 mm
Weight	600 kg
Item No.	75152

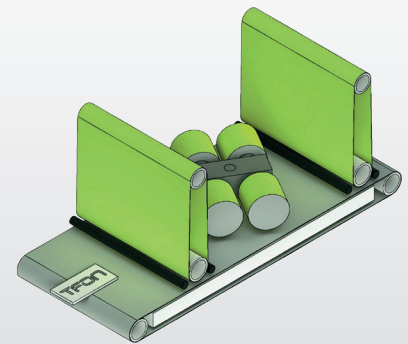
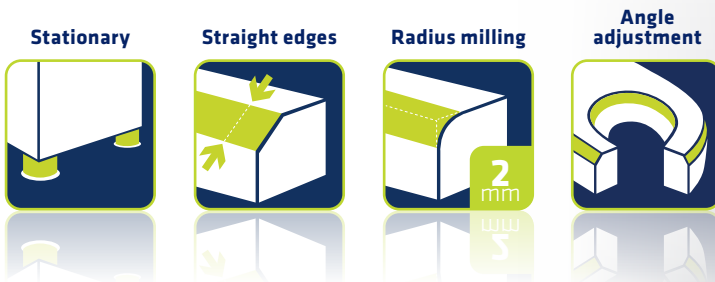
# TF Surfacer

## Deburring and Edge Rounding Machine

Our deburring and edge rounding machines type TF enable an optimal Surface Processing up to the perfect surface finish in the dry grinding process.

The Deburring & Edge Rounding Machines are available with 3 different passage widths. They have various performance spectrums, which are individually adapted to the modular principle customizable and configurable to customer requirements.

Both small and large-area sheet metal parts or workpieces can be processed, regardless of the material. These conveyor machines thus show the best possible flexibility in sheet metal processing.



Example Modular structure with 3 modules: 2 Deburring, 4 Edge rounding and 5 Finishing.

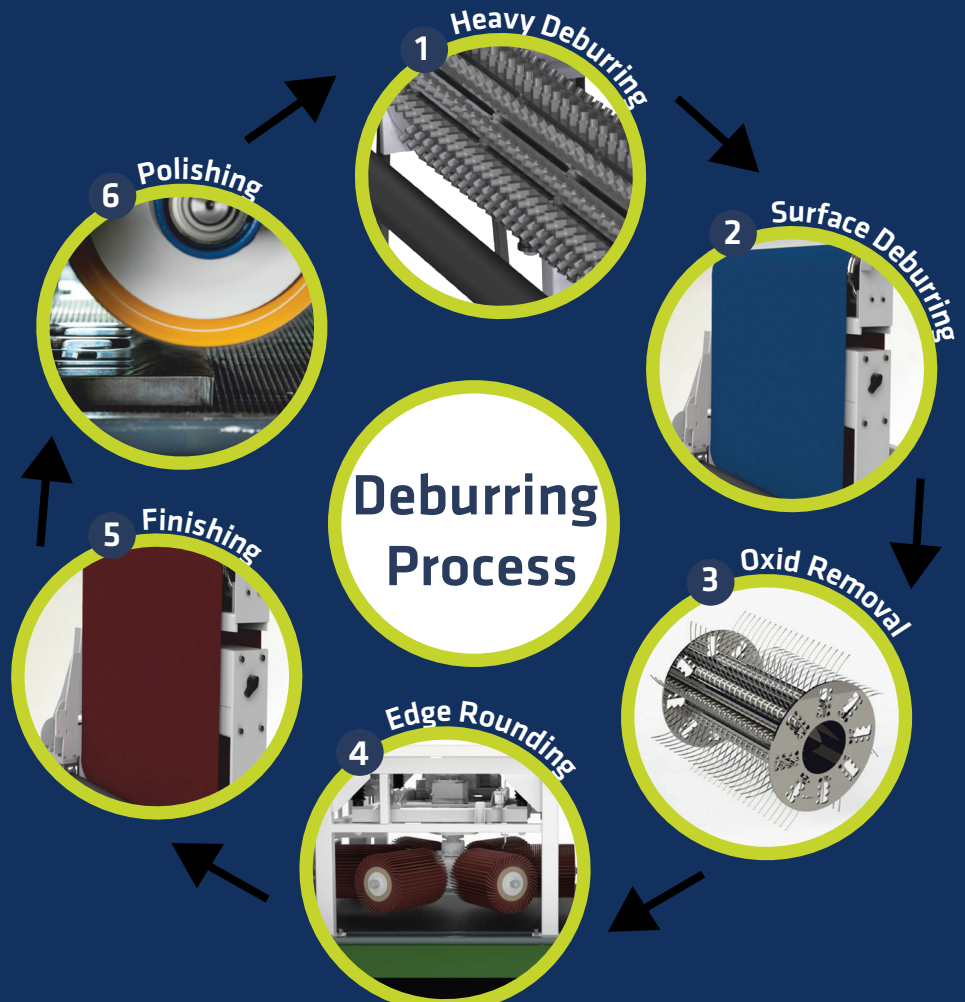
### Applications

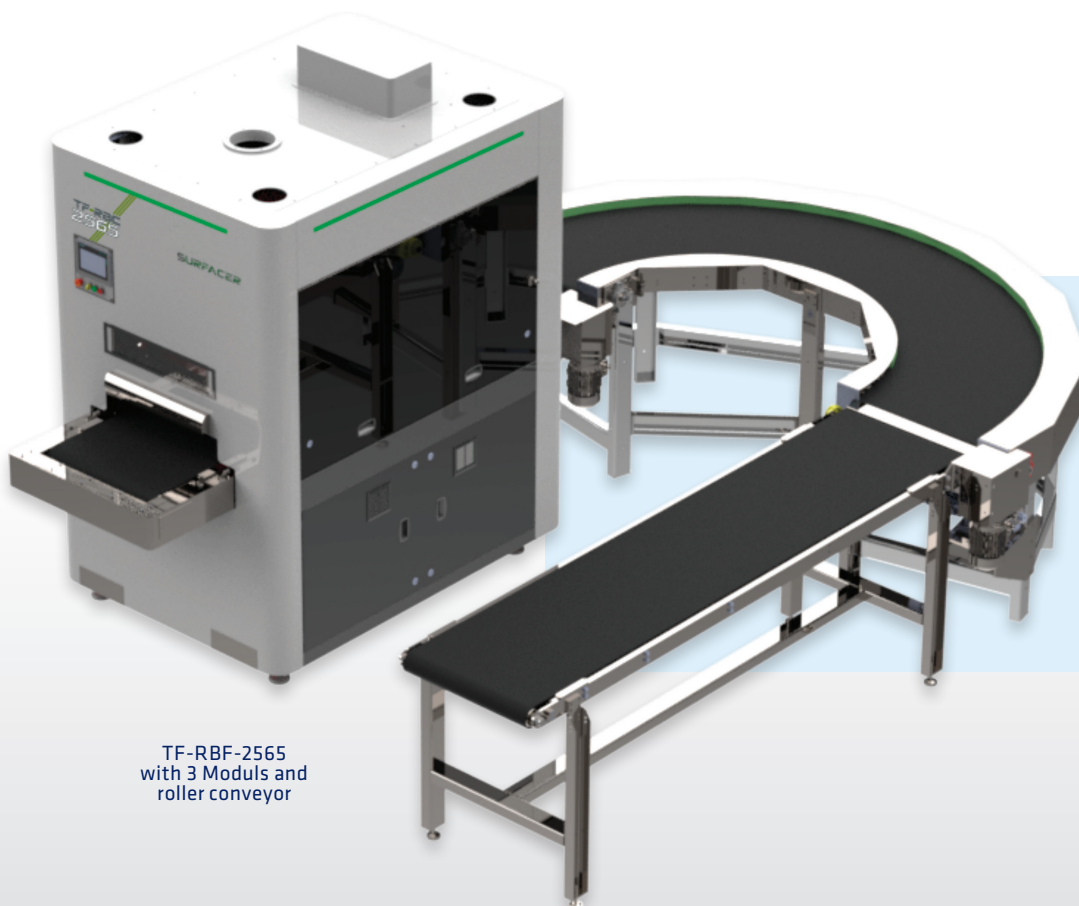
- ▶ Can be used for steel, stainless-steel aluminum and all common ones materials
- ▶ Also, for small parts from 2 mm
- ▶ Equal processing of all inner and outer contours 360° from all directions
- ▶ For punching, laser, plasma or water jet cut parts

### Modules

1. Modul - Heavy Deburring
2. Modul - Surface Deburring
3. Modul - Oxid Removal
4. Modul - Edge Rounding
5. Modul - Finishing
6. Modul - Polishing

\*The modules can be installed individually or in combination





TF-RBF-2565  
with 3 Moduls and  
roller conveyor

### Professional Advantages

- ▶ Different power spectrums through individual adaptive modular principle
- ▶ Remove high standing burrs and spatter
- ▶ Automatic workpiece guidance.
- ▶ Different material thicknesses can be edited

### Features

- ⌚ Electropneumatic vibration control
- ⌚ Automatic laser measurement of the workpiece thickness
- ⌚ Pure Magnetic - Magnetic and vacuum - and pure vacuum fastening systems
- ⌚ The machine operator follows instinctively the user interface
- ⌚ The feed takes place via a conveyor belt

### Modules

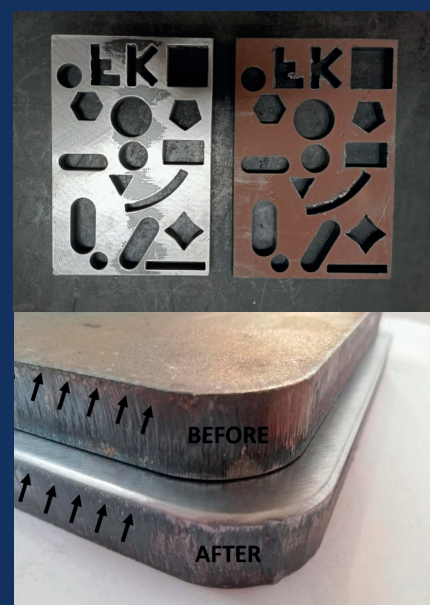
- ⌚ Heavy Deburring: removal of heavy slag
- ⌚ Surface Deburring: removing burrs on the material surface.
- ⌚ Oxid Removal
- ⌚ Edge Rounding: radius up to 2 mm
- ⌚ Finishing: refinement of the surface
- ⌚ Polishing: for a smooth and shiny surface

### Options

- ⌚ Roller conveyor
- ⌚ Extraction system

### Technical data

	TF Surfacer
Energy	400 V, 50/60 Hz
Material thickness	0-120 mm
Max. width of material	650/1000/1300 mm
min. dimensions of the components	50 x 50 mm
Conveyor speed	0,5-0,8 m/min
item No.	on request



# TV 95-SL - Tub Vibrator

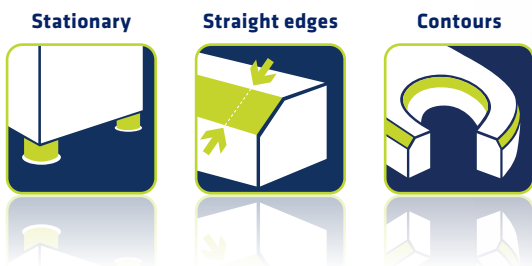
## Stone Vibration Deburring and Slide Grinding Machine

The washing machine-sized tub vibratory finishing machine with a capacity of 95l is our standard machine and ideally suited for prototypes and small series.

Edges and surfaces of the most varied workpieces are machined unmanned. The larger the grinding wheel, the faster the deburring process.



Paper filter PF440



Further accessories can be found in our **Accessory Catalogue**.

### Applications

- ▶ Deburring, polishing, brightening, cleaning, and drying of small parts cut by laser, water- or plasma beam or fine cut workpieces
- ▶ Mixture ratio (grinding tool: workpieces) 7:1 to 3:1
- ▶ Deburring with grinding wheel in appr. 1-90 min.
- ▶ Polishing up to high gloss with polishing media in approx. 10-24 h







TV 95-SL

Separator S95

### Professional advantages

- ▶ Deburring and polishing of different parts with only one machine
- ▶ Simple separation with the use of a separator
- ▶ Vibration strength freely selectable

### Features

- ✔ Simple emptying via an outlet at the side of the machine
- ✔ Low-noise due to noise protection cover
- ✔ With timer
- ✔ Sturdy, long-life construction with plastic-coated steel tub inside
- ✔ Mobile at all times due to rollers on the bottom
- ✔ Mixture ratio (grinding tool: workpieces) 7:1 to 3:1


### Options

- ✔ Grinding and polishing media for individual application
- ✔ Additive (compounds)
- ✔ Paper filter
- ✔ Separator
- ✔ Water tank
- ✔ Collecting tub

### Delivery contents

- ✔ Timer
- ✔ Pump
- ✔ Speed regulation
- ✔ Noise protection cover
- ✔ Operating manual

### Technical data

TV 95-SL 

Motor	1.1 kW   1,500 – 3,000 rpm
Energy	230 V, 50/60 Hz
Tub internal dimensions (LxWxH)	498 × 387 × 410 mm
Filling quantity	70 l
Dimensions (LxWxH)	730 × 650 × 910 mm
Weight	140 kg
Item no.	60546

# TV 15-SL | TV 40-SL | TV 100-SL | TV 200-SL | TV 350-SL | TV 500-SL | TV 500-SL Long | TV 1000-SL

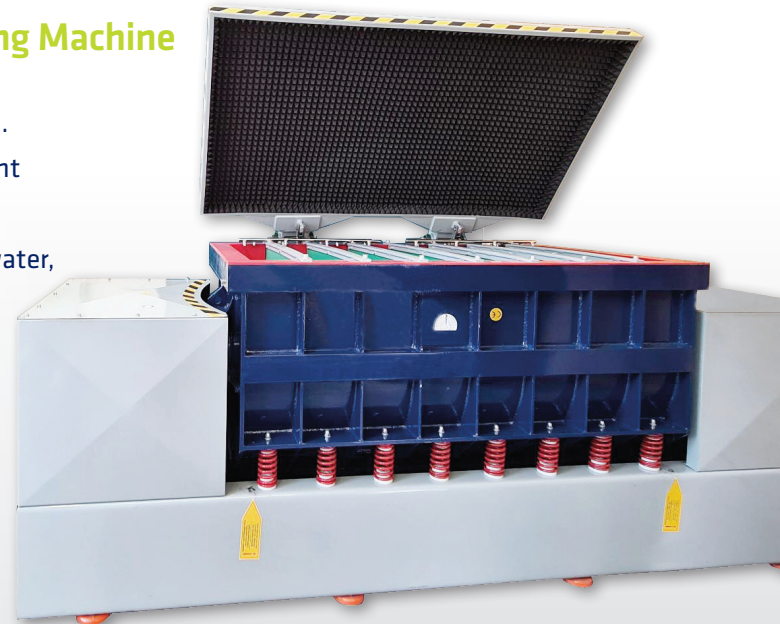
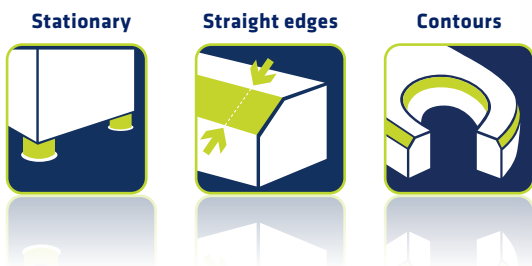
## Stone Vibration Deburring and Slide Grinding Machine

The trough sliding grinders have a capacity of 23 up to 1.180 l.

They enable the surface finishing of workpieces with different shapes and sizes.

This is done by the grinding bodies, the compound and the water, with the appropriate slide grinding machine.

Sensitive workpieces can be contactless processed by means of chambers or workpiece carriers.



TV 1000-SL

### Einsatzbereiche

- ▶ Deburring, polishing, brightening, cleaning, flaming, smoothing, degreasing, edge rounding and drying of small parts cut by laser, water- or plasma beam or fine cut workpieces



### Technical data

	TV 15-SL	TV 40-SL	TV 100-SL	TV 200-SL
Motor	0.1 kW	0.55 kW	1.1 kW 1,200-1,500 rpm	1.5 kW 1,200-1,500 rpm
Energy	230 V, 50 Hz	230 V, 50/60 Hz	400 V, 50 Hz	400 V, 50 Hz
Tub internal dimensions (LxWxH)	490 x 225 x 230 mm	590 x 290 x 290 mm	1000 x 400 x 400 mm	1240 x 440 x 475 mm
Filling quantity	23 l	53 l	130 l	240 l
Dimensions (LxWxH)	630 x 300 x 500 mm	790 x 415 x 670 mm	1280 x 890 x 920 mm	1430 x 950 x 925 mm
Weight	110 kg	175 kg	300 kg	400 kg
Item no.	67144	67146	67147	67149



TV 15-SL with Separator

### Profi-Vorteile

- ▶ Deburring and polishing of several parts with one machine only
- ▶ Vibration strength can be freely selected
- ▶ Folding noise protection cover
- ▶ With timer
- ▶ Wide range of Grinding wheels and compounds

### Features

- ✔ Sturdy, long-life construction with plastic-coated steel tub
- ✔ Consistent effect over the entire surface
- ✔ Very easy emptying of the tub after processing
- ✔ Separation of the workpieces and the grinding bodies by separator
- ✔ Ideal, also for longer workpieces

### Options

- ✔ Grinding and polishing media for individual application
- ✔ Additive (compounds)
- ✔ Separator
- ✔ Dividing walls
- ✔ Noise protection cover, pneumatic
- ✔ Various possibilities for water treatment

### Delivery contents

- ✔ Dosing pump
- ✔ Control with speed regulation
- ✔ Operating manual

### Technical data

	TV 350-SL	TV 500-SL	TV 500-SL Long	TV 1000-SL
Motor	1,1 kW x 2 1.200-1.500 U/min	1,1 kW x 2 1.200-1.500 U/min	1,1kW x 2 1.200-1.500 U/min	4,0 kW x 2 1.200-1.500 U/min
Energy	380 V, 50/60 Hz	380 V, 50/60 Hz	380V / 50Hz	380V / 50Hz
Tub internal dimensions (LxWxH)	1250 x 520 x 520 mm	1580 x 580 x 645 mm	2300 x 450 x 470 mm	1750 x 820 x 850 mm
Filling quantity	380 l	550 l	550 l	1180 l
Dimensions (LxWxH)	1350 x 930 x 950 mm		3750 x 1000 x 750 mm	3354 x 1150 x 1330 mm
Weight	750 kg	1050 kg	1180 kg	2500 kg
Item no.	67151	75361	67155	67157

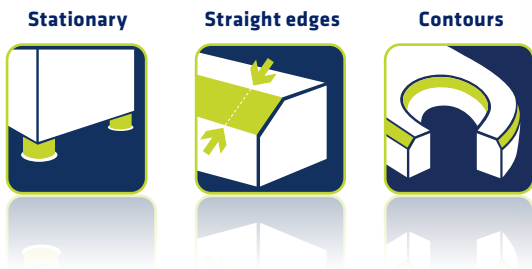
# RV 15-SL | RV 40-SL | RV 120-SL | RV 220-SL | RV 420-SL | RV 720-SL | RV 1000-SL

## Rotary Vibrator / Stone Vibration Deburring and Slide Grinding Machine

The rotary vibrators are universally applicable for deburring, edge rounding and from cleaning to polishing. As single unit or combined with further after-treatment equipment such as drier or centrifuge, the rotary vibrator is upgraded to a fully automatic vibratory grinding centre.



RV 220-SL



### Features

- ⌚ Simple emptying via an outlet at the side of the machine
- ⌚ With timer
- ⌚ Sturdy, long-life construction with plastic-coated steel tub
- ⌚ Integrated separation
- ⌚ Easy to operate and maintain

### Options

- ⌚ Grinding and polishing media for individual application
- ⌚ Additive (compounds)
- ⌚ Pneumatic noise protection cover
- ⌚ Separation flap, optionally manual or automatic
- ⌚ Rotary dryer
- ⌚ Workpiece slide
- ⌚ Various perforated screens for integrated separation
- ⌚ Various opportunities for water treatment

### Delivery contents

- ⌚ Speed regulation
- ⌚ Dosing pump
- ⌚ Perforated screen
- ⌚ Controller
- ⌚ Operating manual



Paper filter PF-120



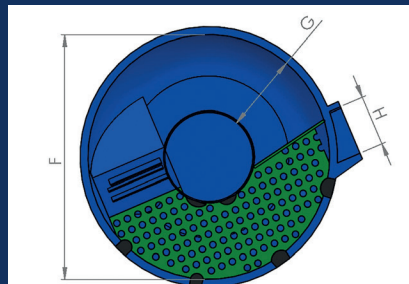
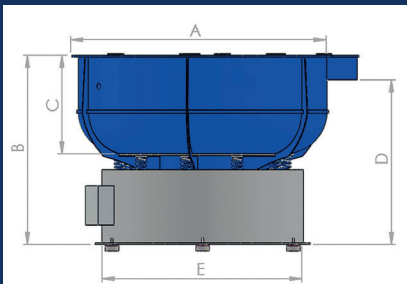


RV 220-SL

### Professional Advantages

- ▶ Deburring and polishing of several parts with one machine only
- ▶ Vibration strength can be freely selected
- ▶ Optional noise protection cover available
- ▶ Can be combined with post-treatment systems
- ▶ Large range of chips and compounds

Accessories on request



### Technical data

	RV 15-SL	RV 40-SL	RV 120-SL	RV 220-SL	RV 420-SL	RV 720-SL	RV 1000-SL
Motor	0,17kW	0,37kW	1,1kW	1,7 kW	2,2 kW	4 kW	11 kW
Energy	230 V / 50 Hz	230 V / 50 Hz	400 V / 50 Hz	400 V / 50Hz	400 V / 50Hz	400 V / 50Hz	400 V / 50Hz
Tub diameter (F= Ø)	345 mm	525 mm	780 mm	1020 mm	1235 mm	1460 mm	1650 mm
Tub internal dimensions (F×G×C) mm	345 x 130 x 200	525 x 228 x 276	780 x 284 x 315	1020 x 300 x 430	1235 x 380 x 480	1460 x 445 x 595	1650 x 485 x 685
Total volume	18 l	43 l	130 l	280 l	490 l	830 l	1200 l
Usable Filling volume	8 l	25-35 l	70-90 l	220 l	300-350 l	400-550 l	700-850 l Max.
Dimensions (A x B)	410 x 520 mm	565 x 680 mm	852 x 791 mm	1150 x 1000 mm	1355 x 1000 mm	1600 x 1200 mm	1785 x 1450 mm
Weight	42 kg	100 kg	225 kg	460 kg	780 kg	1270 kg	1770 kg
Item no.	68821	68625	67782	67577	70623	67558	67372

\* Trowalise® (Registered trademark of Walther Trowal)

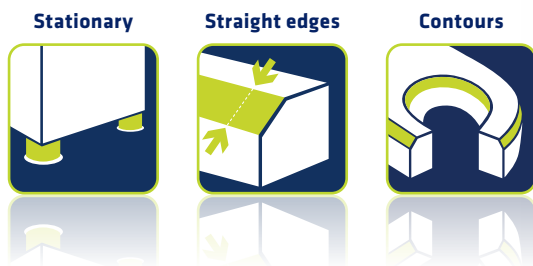
# ASM 18 | ASM 60

## Centrifugal plant

The ASM centrifugal machines are ideal for small parts. With higher processing intensity, they deburr 10-20 times faster than vibratory finishing machines. The centrifugal system can be planned as a stand-alone unit up to a fully automatic system.

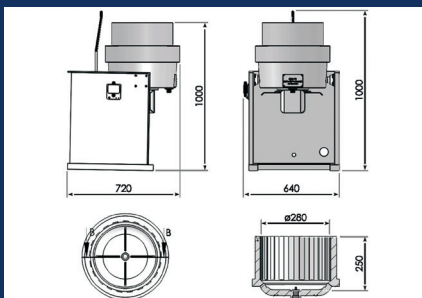


ASM 60 with autom. separator

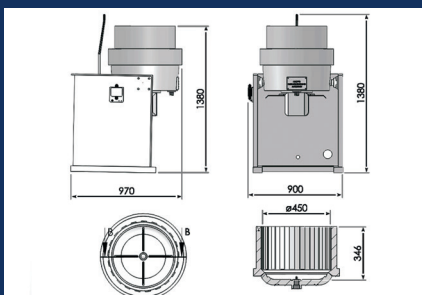


Accessories on request

ASM 18



ASM 60



### Features

- sturdy, long-life construction with plastic-coated steel tub
- Easy emptying through tiltable working tank
- Compact device including base frame and manual separation (ASM 18)

### Options

- Grinding and polishing media for individual application
- Additive (compounds)
- Separator
- Various opportunities for water treatment (e.g. paper filter)

### Delivery contents

- Timer
- Dosing pump
- Manual sorting sieve (ASM 18)
- Controller
- Operating manual

### Technical data

	ASM 18	ASM 60
Motor	0,75 kW   1,500 rpm	2,2 kW   1,500 rpm
Energy	400 V, 50-60 Hz	400 V / 50-60 Hz
Dimensions of work tank	Ø 280 x 250 mm	Ø 520 x 346 mm
Dimensions	720 x 640 x 1000 mm	970 x 900 x 1380 mm
Weight	120 kg	380 kg
Item no.	67883	67882

# RT 200 | RT 400 | RT 600 | RT 800 - Rotary Dryer

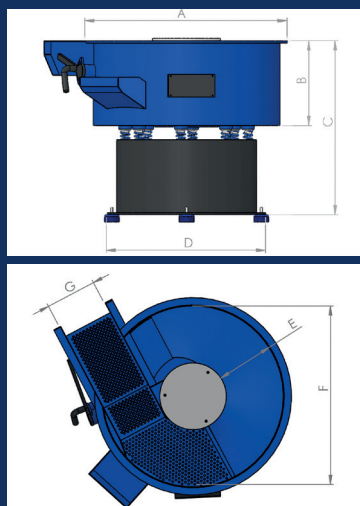
## For the Rotary Vibrator

The rotary dryers are suitable for spot-free drying of all types of workpieces. The use of the hot air blower ensures uniform drying of the workpieces and the drying granulate.



RT 200

Accessories on request



### Features

- ✔ Sturdy, long-life construction with plastic-coated steel tub
- ✔ Uniform effect over the entire surface
- ✔ Spotless drying
- ✔ Consistent drying quality
- ✔ Increased service life of the drying granulate through use of the hot air blower
- ✔ Uniform rise of the work tank ensures good circulation and optimum workpiece transport

### Options

- ✔ Dry media for individual application
- ✔ Separation flap, optionally manual or automatic
- ✔ Indirect drying

### Delivery contents

- ✔ Controller
- ✔ Hot-air blower
- ✔ Separation flap, manual
- ✔ Operating manual

### Technical data

	RT 200	RT 400	RT 600	RT 800
Motor	1.1 kW   1,500 rpm	1.1 kW   1,500 rpm	1.1 kW   1,500 rpm	4.0 kW   1,500 rpm
Energy	400 V, 50 Hz	400 V, 50 Hz	400 V, 50 Hz	400 V, 50 Hz
Tub diameter (F= Ø)	1000 mm	1200 mm	1400 mm	1420 mm
Tub internal dimensions F×E×B)	1000 x 315 x 440 mm	1200 x 380 x 500 mm	1400 x 460 x 550 mm	1420 x 530 x 630 mm
Dimensions (A x C)	1080 x 1010 mm	1280 x 1080 mm	1480 x 1180 mm	1500 x 1130 mm
Max. Heating power	1000W	1000W	1600W	2400W
Temperature for the corn granules	50°	50°	50°	50°
Weight	350 kg	480 kg	570 kg	920 kg
Item no.	67689	68015	67879	67374

# ENVIRO 1000

## Water treatment system

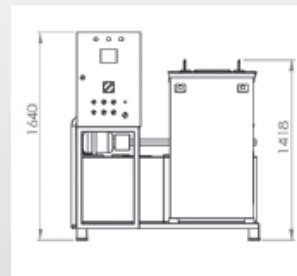
The new Enviro 1000 is an automatic water treatment system that purifies the process water and compound produced after vibratory finishing and reconditions it for renewed vibratory finishing operations.

The centrifuge cleans and recycles the process water by separating the solid particles and often also oils from the process water and depositing them as solid sludge on the edge of the centrifuge basket used for this purpose.

This cycle of processes: Vibratory finishing, cleaning and recycling the process water and finally reusing the process water in a renewed vibratory finishing process saves costs and is extremely environmentally friendly.



Enviro 1000



### Applications

- ▶ **Costs are reduced (water, compound, disposal and manpower), environmentally friendly circular flow operation**
- ▶ **Savings of up to 98% water and 90% compound are possible**
- ▶ **1,000 l process water can be purified per hour**
- ▶ **High centrifugal forces enable even very small particles and quantities to be deposited.**
- ▶ **PLC Software: Fully automatic PLC process control**
- ▶ **No extensive maintenance as with previous manual filter systems**
- ▶ **Space-saving**

### Features

- Ⓢ **Use in continuous operation possible**
- Ⓢ **The capacity of the waste water treatment is 10 t / day**
- Ⓢ **The metal abrasion is separated in a sturdy polyurethane catch basket.**
- Ⓢ **INOX filter**
- Ⓢ **Automatic engine lubrication**
- Ⓢ **Waste water mixer prevents the sludge from settling to the bottom**



### Technical data

#### Enviro 1000 Ⓢ

Motor	2,2 kW   2.500 U/min
Energy	400 V, 50 Hz
Dimensions	1500 x 1500 x 1640 mm
Capacity	1000 l/h
Freshwater tank - volume	200 l
Wastewater tank - volume	400 l
Weight	320 kg
Item no..	67376



# UA 5

## Drive unit

Whether grinding, polishing, brushing or deburring, the universal drive machine can be used in all materials. A variety of tools makes the machine very flexible and indispensable in your production.



### Applications

- ▶ Mobile drive unit for the universal operation in the fabrication
- ▶ Grinding, polishing, brushing and deburring of all common materials with only one machine
- ▶ Flexible and mobile operation with flexible shaft



### Features

- ✔ Stepless speed regulation
- ✔ Easy handling and operation
- ✔ Smooth running due to massive spindle bearing
- ✔ Can be used for common grinding, polishing, brushing and deburring tools

### Options

- ✔ Extended shaft
- ✔ Flexible shaft
- ✔ Gear rim chuck with mounting
- ✔ Grinding belt wheel
- ✔ Various grinding, polishing, brushing and deburring tools for individual use

### Delivery contents

- ✔ 3× spindle mounts
- ✔ 3× star grinders each, big and small
- ✔ Cover cap
- ✔ Protection sheet
- ✔ Operating manual

### Technical data

UA 5

Motor	0.75 kW   600 – 4,000 rpm
Energy	400 V, 50/60 Hz
Dimensions (LxWxH)	600 × 350 × 420 mm
Weight	45.9 kg
No.	29531

# EDG 213 | EDG 1226

## Drill grinder

The handy drill grinders are ideal for grinding HSS- and HM-spiral drills. Due to the adjustable point angles from 90° to 140°, this model can be universally used. Easy handling and their efficiency make these machines a real winner in the field of drill grinding.



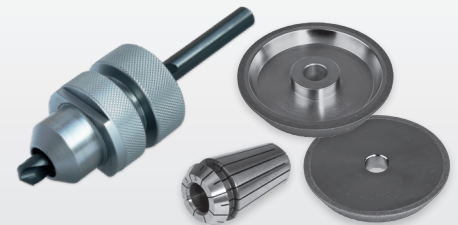
EDG 213

EDG 1226

### Stationary



EDG 213



Further accessories can be found in our **Accessory Catalogue**.

## Applications

- ▶ Grinding and pointing out of HSS- and HM twist drills in one clamping operation



## Features

- ✔ Good handling thanks to easy and practical design
- ✔ Sharpening and regrinding of drills through specially guided collets
- ✔ With relief grinding for perfect shaping of the transverse cutting edge
- ✔ Universally adjustable point angle
- ✔ Durable grinding wheels

## Options

- ✔ Diamond grinding wheel

## Delivery contents

- ✔ Allen key 4 mm
- ✔ Allen key 5 mm (for EDG 213)
- ✔ Allen key 6 mm (for EDG 1226)
- ✔ Clamping pin (for EDG 213)
- ✔ CBN grinding wheel
- ✔ Collet set
- ✔ Tool holder
- ✔ Operating manual

## Technical data

	EDG 213	EDG 1226
Motor	0.15 kW   5,500 rpm	0.45 kW   4,500 rpm
Energy	230 V, 50/60 Hz	230 V, 50/60 Hz
Grinding area	ø 2 - 13 mm	ø 12 - 26 mm
Clearance angle/ Point angle	90° - 140°	90° - 140°
Dimensions (LxWxH)	290 × 140 × 140 mm	450 × 230 × 190 mm
Weight	9.7 kg	28.1 kg
Item no.	42769	10212

# Neutrix

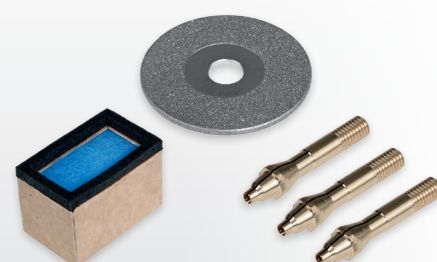
## Electrode Grinding Machine

The Neutrix is a small, lightweight and therefore portable grinding device that can accurately grind reproducible quality grinds on tungsten electrodes centrally in the longitudinal direction.

A stand can be mounted for workshop use.



Neutrix with pedestal SW



Further accessories can be found in our **Accessory Catalogue**.

Stationary



### Applications


- ▶ Tungsten electrode resharpening for TIG, plasma and orbital welding



### Features

- ✔ Integrated dust exhaust
- ✔ Stepless adjustment of the point angle 15° - 180°
- ✔ Eccentric disc enables 3-fold utilisation of the diamond disc
- ✔ Short grinding time - only 0.3mm consumption per grinding process due to grinding gauge
- ✔ Speed control for optimum grinding speed
- ✔ Grinding of tungsten electrodes up to 15mm is possible with special collets

### Technical data

	Neutrix 
Motor	0.12 kW   8,000 - 22,000 rpm
Energy	230 V, 50/60 Hz
LpA sound pressure level	88.8 dB/A
Vibration value	5 m/s <sup>2</sup>
Diamond disk	ø 40 mm
Weight	3.1 kg
Item no.	10921

### Options

- ✔ Stand S
- ✔ Pedestal SW (with tool deposit)
- ✔ Neutrix S with fixed pedestal and large dust filter

### Delivery contents

- ✔ Allen key 2 and 4 mm
- ✔ Transport case
- ✔ Electrode holder with collet sections ø 1.6 / 2.4 / 3.2 mm
- ✔ Disposal bag for single-use filters
- ✔ Open-end spanners SW 13/17 and 4 mm
- ✔ Diamond grinding disk
- ✔ Operating manual



**Assfalg is the Ace for metal**

**We offer solutions and tools**

- Deburring machines
- Magnet systems
- Selected tools

**for stationary and mobile metal working.**

**Our in-house and sales representatives will be pleased to assist you at any time.**

**Call us:**

**Our sales hotline  
+49 (0) 7171 / 92505 - 0**





WOULD YOU LIKE TO KNOW MORE?

**We will be happy to advise you.  
By phone or in a personal meeting.**

➔ T +49 (0) 71 71.92 505-0    ➔ [info@assfalg-metal.com](mailto:info@assfalg-metal.com)



[www.assfalg-metal.com](http://www.assfalg-metal.com)

**Assfalg GmbH**

Buchstraße 149  
73525 Schwäbisch Gmünd  
Germany

Phone +49 (0) 71 71.92 505-0

Fax +49 (0) 71 71.92 505-50

**assfalg**